

High Voltage Rectifier Diode

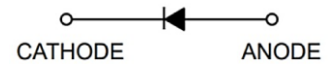
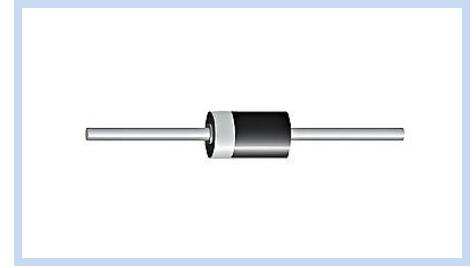
15KV DO-415

2CLG1015

MERITEK

FEATURE

- High Reverse Voltage Capability
- High Surge Current Resistance
- Fast Recovery Time for High-Frequency Operations
- Engineered for high-voltage rectification and protection



APPLICATIONS

- Medical Diagnostic Systems: X-Ray, CT and MRI Scanners
- Industrial High-Voltage and High-Power Machinery
- DC HV Power Supply, SCR-Controller Rectifier
- HF AC-to-DC Rectifier, RF and High-Speed Switching

ELECTRICAL CHARACTERISTICS

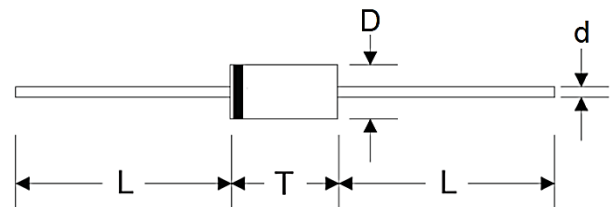
| Parameter | Symbol | 2CLG1015 | Unit |
|---|----------------|---------------------|------------|
| Maximum Recurrent Peak Reverse Voltage | V_{RRM} | 15 | KV |
| Maximum Average Forward Rectified Current | $I_{F(AV)}$ | 100 | mA |
| Peak Forward Surge Current, 8.3ms single half-sine-wave superimposed on rate load | I_{FSM} | 2 | A |
| Maximum Forward Voltage at $I_{FM} = 100mA$ | V_{FM} | 45 | V |
| Maximum Reverse Current at Rated DC Blocking Voltage | I_R | $T_A = 25^\circ C$ | 5 |
| | | $T_A = 100^\circ C$ | 50 |
| Maximum Reverse Recovery Time | t_{rr} | 0.15 | μs |
| Operating Junction and Storage Temperature Range | T_J, T_{STG} | -40 ~ +120 | $^\circ C$ |

Notes:

1. Ratings at 25°C ambient temperatures unless otherwise specified.
2. Reverse Recovery Time Test Condition: $I_F = 2mA$, $I_{RM} = 4mA$, $I_{RR} = 1mA$.

DIMENSIONS

| Item | Min.(mm) | Max.(mm) |
|------|----------|----------|
| D | 4.0 | 4.4 |
| d | 0.77 | 0.83 |
| L | 26.0 | - |
| T | 14.8 | 15.2 |

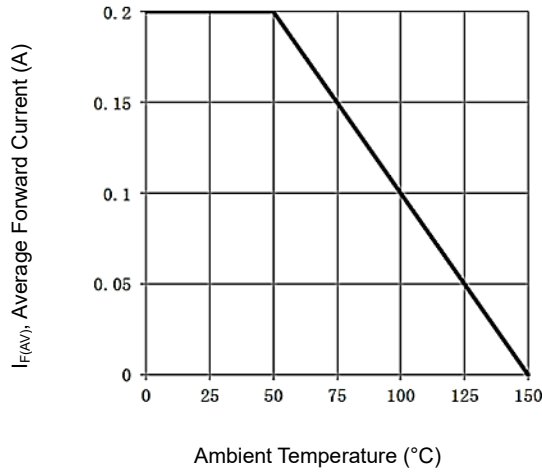


Note:

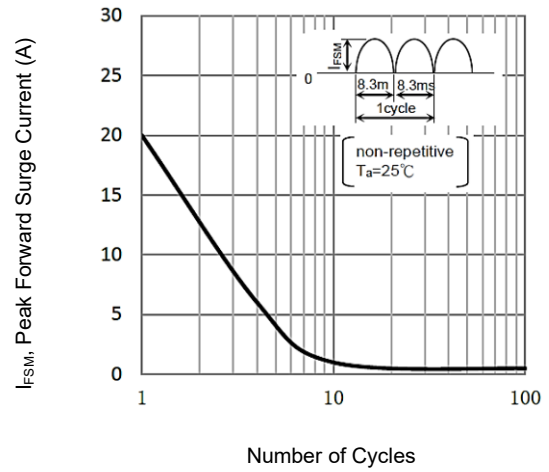
1. Case: DO-415, Molded Plastic
2. Epoxy: UL Flammability Classification Rating 94V-0
3. Polarity: Color Band Denotes Cathode End

CHARACTERISTIC CURVES

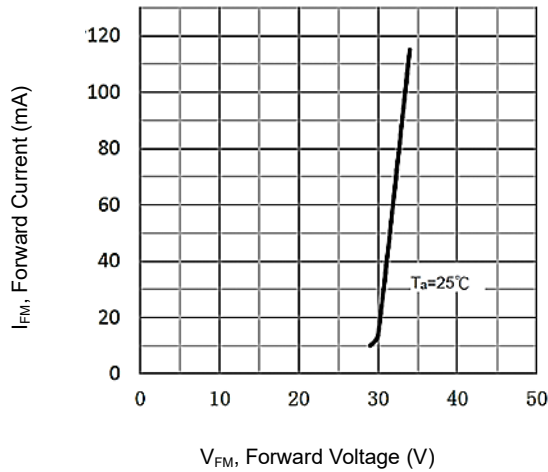
Typical Forward Current Derating Curve



Maximum Non-repetitive Forward Surge Current



Typical Forward Characteristics



Typical Reverse Characteristics

