

# High Voltage Rectifier Diode

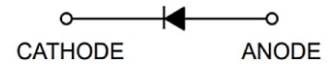
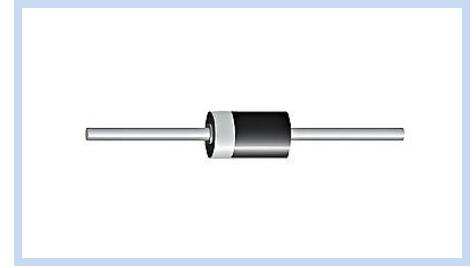
## 20KV DO-312

2CLG0520

MERITEK

### FEATURE

- High Reverse Voltage Capability
- High Surge Current Resistance
- Fast Recovery Time for High-Frequency Operations
- Engineered for high-voltage rectification and protection



### APPLICATIONS

- Medical Diagnostic Systems: X-Ray, CT and MRI Scanners
- Industrial High-Voltage and High-Power Machinery
- DC HV Power Supply, SCR-Controller Rectifier
- HF AC-to-DC Rectifier, RF and High-Speed Switching

### ELECTRICAL CHARACTERISTICS

Parameter	Symbol	2CLG0520	Unit
Maximum Recurrent Peak Reverse Voltage	$V_{RRM}$	20	KV
Non-Repitive Peak Reverse Voltage	$V_{RSM}$	20	KV
Maximum Average Forward Rectified Current	$I_{F(AV)}$	50	mA
Peak Forward Surge Current, 8.3ms single half-sine-wave superimposed on rate load	$I_{FSM}$	2	A
Maximum Forward Voltage at $I_{FM} = 10mA$	$V_{FM}$	40	V
Maximum Reverse Current at Rated DC Blocking Voltage	$I_R$	5	$\mu A$
Maximum Reverse Recovery Time	$t_{rr}$	0.15	$\mu s$
Operating Junction and Storage Temperature Range	$T_J, T_{STG}$	-40 ~ +150	$^{\circ}C$

Notes:

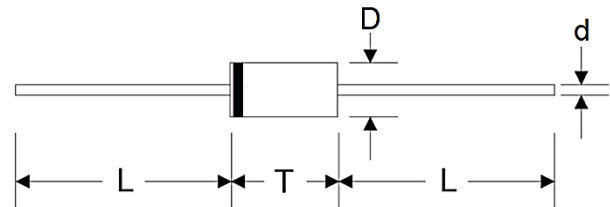
1. Ratings at 25 $^{\circ}C$  ambient temperatures unless otherwise specified.
2. Reverse Recovery Time Test Condition:  $I_F=2mA, I_{RM}=4mA, I_{RR}=1mA$ .

### DIMENSIONS

Item	Min.(mm)	Max. (mm)
D	2.8	3.2
d	0.57	0.63
L	26.0	-
T	11.8	12.2

Note:

1. Case: DO-312, Molded Plastic
2. Epoxy: UL Flammability Classification Rating 94V-0
3. Polarity: Color Band Denotes Cathode End



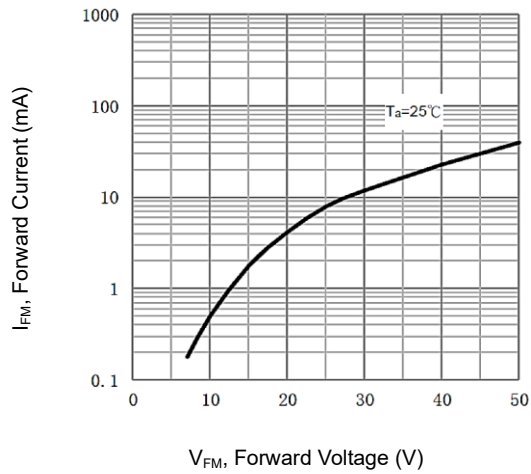
# High Voltage Rectifier Diode 20KV DO-312

2CLG0520

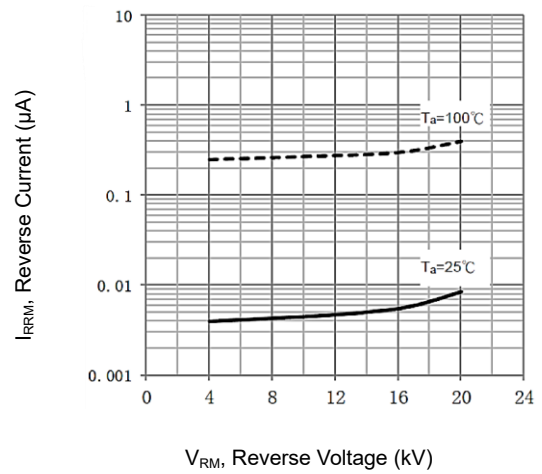
MERITEK

## CHARACTERISTIC CURVES

Typical Forward Characteristics



Typical Reverse Characteristics



Forward Current Derating Curve

