

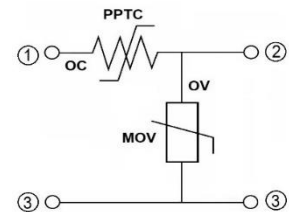
Metal Oxide Varistor Current Protected Three Terminal

CPV-T Series

MERITEK

FEATURE

- Hybrid Design Using PPTC Technology With 10, 14 Mm MOV
- Excellent Overcurrent Protection for Life Extension of MOV and End Product, Further Preventing Fire Hazard
- Fast Responsive Time Than TMOV Device
- Resettable To Reduce Repair Labor Potentially
- Customizable To Specific Application Demands
- Application: LED Lighting, PLC Adapters, AC/DC Power Supplies, Modem, White Good, Appliances, Industrial Control
- Comply with IEC61000-4-2, IEC61000-4-4, IEC61000-4-5 Test
- UL/cUL Safety Approved: Certification No: E223037 (PPTC)
- UL/cUL Safety Approved: Certification No: E326004 (MOV)



MECHANICAL DATA

- Lead Material: Copper Clad Steel Wire, AWG20
- UL Flammability Classification 94V-0
- Solderable Characteristics: Per MIL-STD-202, method 208E

ELECTRICAL CHARACTERISTICS – Overcurrent (Terminal 1-2)

Part Number	Hold Current (A)	Trip Current (A)	Time to Trip			Resistance		
			Current (A)	Typ. Time (Sec)	Max. Time (Sec)	R _{MIN} Ω	R _{MAX} Ω	R _{1MAX} Ω
			(A)	(Sec)	(Sec)	Ω	Ω	Ω
CPV10271-T15	0.15	0.30	1.00	0.90	3.00	6.50	14.00	16.00
CPV10431-T15	0.15	0.30	1.00	0.90	3.00	6.50	14.00	16.00
CPV14431-T35	0.35	0.75	3.00	0.50	2.00	1.40	2.20	2.80
CPV14431-T75	0.75	1.50	7.00	0.90	1.20	0.37	0.80	1.00

ELECTRICAL CHARACTERISTICS – Overvoltage (Terminal 2-3)

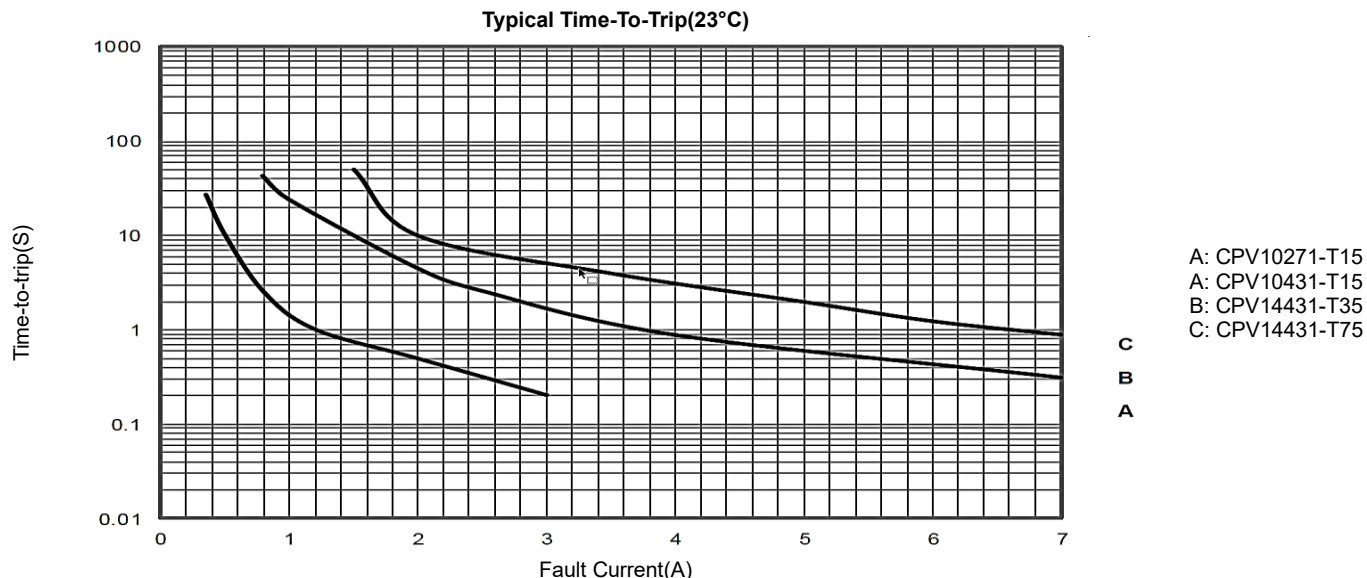
Part Number	Varistor Voltage at 1ma		DC Resistance at 100V	Max Clamping Voltage at 25A	Max Peak Current, 8/20μs		Typical Power
	V _{DC}	Tolerance	MΩ	V _{DC}	1x Pulse	15x Pulse	Pd
CPV10271-T15	260	+14% / -7%	>10	455	4500A	3000A	0.25W
CPV10431-T15	430	+10% / -10%	>10	710	4500A	3000A	0.25W
CPV14431-T35	430	+10% / -10%	>10	710	4500A	3000A	0.60W
CPV14431-T75	430	+10% / -10%	>10	710	4500A	3000A	0.60W

PART NUMBERING SYSTEM

CPV **10** **271** - **T** **15**
 (1) (2) (3) (4) (5)

No	Item	Code	Description	
(1)	Meritek Series	CPV	Current Protected Metal Oxide Varistor series	
(2)	Diameter	10	10: 10mm	14: 14mm
(3)	Varistor Voltage	271	271: 270VDC	First two digits: significant, Third: multiplier
(4)	Terminal Type	T	T: Three Terminal	
(5)	Current Rating	15	15: 0.15A	35: 0.35A, 75: 0.75A

CHARACTERISTIC CURVES



DIMENSIONS

Figure 1

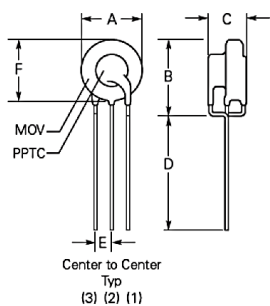


Figure 2

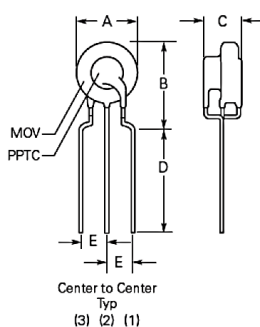
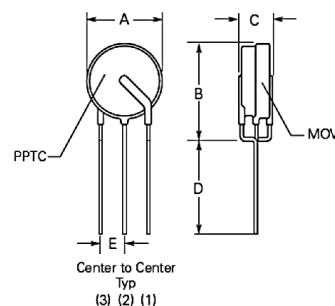


Figure 3



Unit: mm

Part Number	Figure	A	B	C	D		E	F
		Max.	Max.	Max.	Min.	Max.	Nominal	Max.
CPV10271-T15	1	12.0	15.0	6.6	6.0	-	2.5	12.0
CPV10431-T15	2	12.0	17.0	7.4	8.5	11.5	5.1	-
CPV14431-T35	2	16.0	21.0	7.4	3.0	5.0	5.1	-
CPV14431-T75	3	16.0	21.0	7.4	3.0	5.0	2.5	-

*Specifications subject to change without notice.