

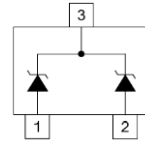
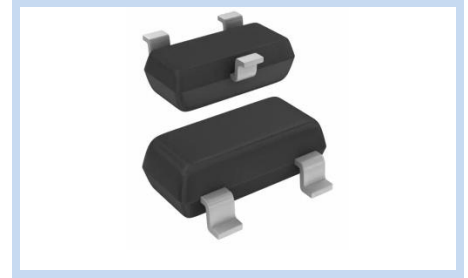
Zener Diodes Array, Dual SOT-23 Common Cathode

BZX84C-CC Series

MERITEK

FEATURE

- Zener Voltage Range: 2.4V to 51V
- Power Dissipation: 350mW
- Junction Temperature Range : -55 to +150°C
- Application: Power Management Systems, Voltage Regulation



MECHANICAL DATA

- Case: SOT-23, Molded Plastic
- Terminals: Solderable Per MIL-STD-750, Method 2026



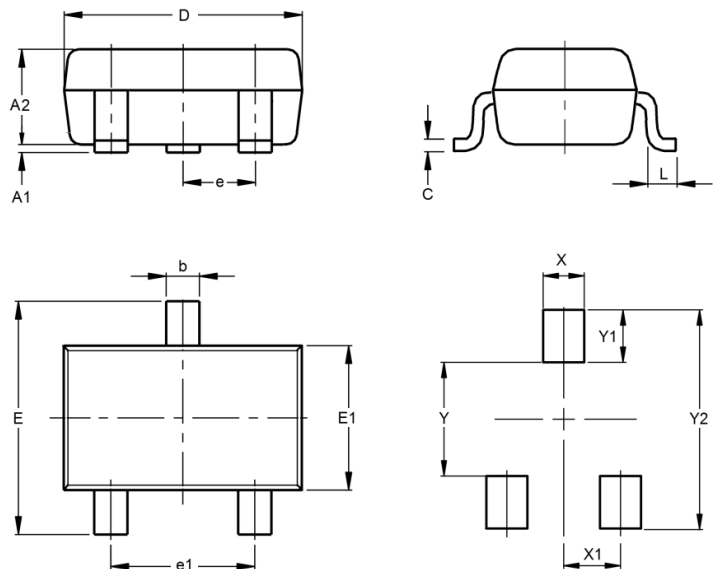
ABSOLUTE MAXIMUM RATINGS

| Parameter | Symbols | Value | Unit |
|--------------------------------|-----------------|----------|------|
| Power Dissipation | P_D | 350 | mW |
| Resistance Junction to Ambient | $R_{\theta JA}$ | 357 | °C/W |
| Junction Temperature Range | T_J | -55~+150 | °C |
| Storage Temperature Range | T_{STG} | -55~+150 | °C |

DIMENSIONS

Unit: mm

| Item | SOT-23 | |
|------|--------|------|
| | Min. | Max. |
| A1 | 0.01 | 0.1 |
| A2 | 0.95 | 1.40 |
| b | 0.35 | 0.5 |
| C | 0.08 | 0.19 |
| D | 2.70 | 3.10 |
| e | 0.89 | 1.02 |
| e1 | 1.78 | 2.04 |
| E | 2.20 | 3.00 |
| E1 | 1.20 | 1.65 |
| L | 0.2 | - |
| X | 3.4 | 3.4 |
| X1 | 1.4 | 1.4 |
| Y | 0.9 | 0.9 |
| Y1 | 0.7 | 0.7 |
| Y2 | 2.0 | 2.0 |



Zener Diodes Array, Dual SOT-23 Common Cathode

BZX84C-CC Series

MERITEK

ELECTRICAL CHARACTERISTICS

| Part Number | Nominal Zener Voltage V_Z at I_{ZT} | | | Max Zener Impedance | | Max Reverse Leakage Current | |
|-------------|---|------|------|----------------------|----------|-----------------------------|------|
| | Nom | Min | Max | Z_{ZT} at I_{ZT} | I_{ZT} | I_R at V_R | |
| | (V) | (V) | (V) | (Ω) | (mA) | (μ A) | (V) |
| BZX84C2V4CC | 2.4 | 2.2 | 2.6 | 100 | 5 | 50 | 1.0 |
| BZX84C2V7CC | 2.7 | 2.5 | 2.9 | 100 | 5 | 20 | 1.0 |
| BZX84C3V0CC | 3.0 | 2.8 | 3.2 | 95 | 5 | 10 | 1.0 |
| BZX84C3V3CC | 3.3 | 3.1 | 3.5 | 95 | 5 | 5.0 | 1.0 |
| BZX84C3V6CC | 3.6 | 3.4 | 3.8 | 90 | 5 | 5.0 | 1.0 |
| BZX84C3V9CC | 3.9 | 3.7 | 4.1 | 90 | 5 | 3.0 | 1.0 |
| BZX84C4V3CC | 4.3 | 4.0 | 4.6 | 90 | 5 | 3.0 | 1.0 |
| BZX84C4V7CC | 4.7 | 4.4 | 5.0 | 80 | 5 | 3.0 | 2.0 |
| BZX84C5V1CC | 5.1 | 4.8 | 5.4 | 60 | 5 | 2.0 | 2.0 |
| BZX84C5V6CC | 5.6 | 5.2 | 6.0 | 40 | 5 | 1.0 | 2.0 |
| BZX84C6V2CC | 6.2 | 5.8 | 6.6 | 10 | 5 | 3.0 | 4.0 |
| BZX84C6V8CC | 6.8 | 6.4 | 7.2 | 15 | 5 | 2.0 | 4.0 |
| BZX84C7V5CC | 7.5 | 7.0 | 7.9 | 15 | 5 | 1.0 | 5.0 |
| BZX84C8V2CC | 8.2 | 7.7 | 8.7 | 15 | 5 | 0.7 | 5.0 |
| BZX84C9V1CC | 9.1 | 8.5 | 9.6 | 15 | 5 | 0.5 | 6.0 |
| BZX84C10CC | 10 | 9.4 | 10.6 | 20 | 5 | 0.2 | 7.0 |
| BZX84C11CC | 11 | 10.4 | 11.6 | 20 | 5 | 0.1 | 8.0 |
| BZX84C12CC | 12 | 11.4 | 12.7 | 25 | 5 | 0.1 | 8.0 |
| BZX84C13CC | 13 | 12.4 | 14.1 | 30 | 5 | 0.1 | 8.0 |
| BZX84C15CC | 15 | 14.3 | 15.8 | 30 | 5 | 0.05 | 10.5 |
| BZX84C16CC | 16 | 15.3 | 17.1 | 40 | 5 | 0.05 | 11.2 |
| BZX84C18CC | 18 | 16.8 | 19.1 | 45 | 5 | 0.05 | 12.6 |
| BZX84C20CC | 20 | 18.8 | 21.2 | 55 | 5 | 0.05 | 14.0 |
| BZX84C22CC | 22 | 20.8 | 23.3 | 55 | 5 | 0.05 | 15.4 |
| BZX84C24CC | 24 | 22.8 | 25.6 | 70 | 5 | 0.05 | 16.8 |
| BZX84C27CC | 27 | 25.1 | 28.9 | 80 | 2 | 0.05 | 18.9 |
| BZX84C30CC | 30 | 28.0 | 32.0 | 80 | 2 | 0.05 | 21.0 |
| BZX84C33CC | 33 | 31.0 | 35.0 | 80 | 2 | 0.05 | 23.1 |
| BZX84C36CC | 36 | 34.0 | 38.0 | 90 | 2 | 0.05 | 25.2 |
| BZX84C39CC | 39 | 37.0 | 41.0 | 130 | 2 | 0.05 | 27.3 |
| BZX84C43CC | 43 | 40.0 | 46.0 | 150 | 2 | 0.05 | 30.1 |
| BZX84C47CC | 47 | 44.0 | 50.0 | 170 | 2 | 0.05 | 32.9 |
| BZX84C51CC | 51 | 48.0 | 54.0 | 180 | 2 | 0.05 | 35.7 |

Note:

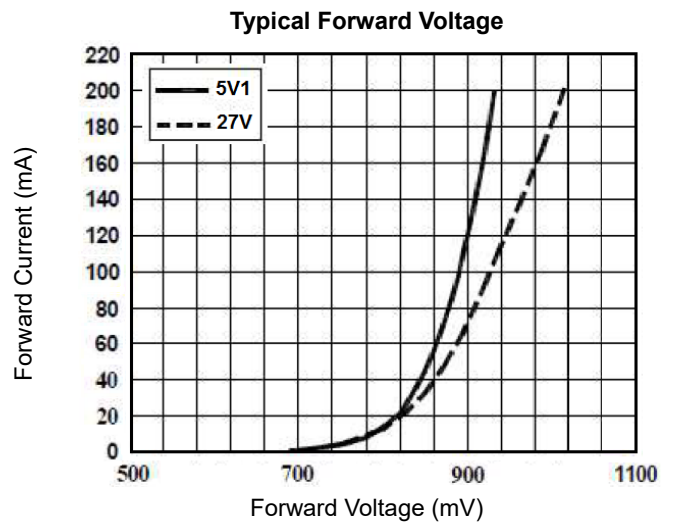
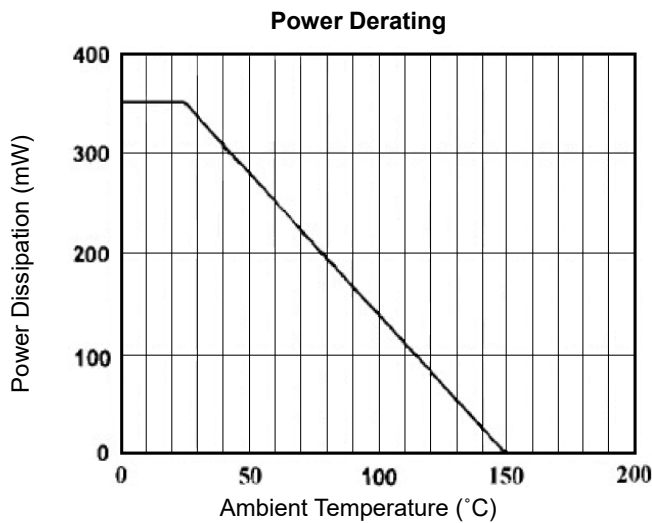
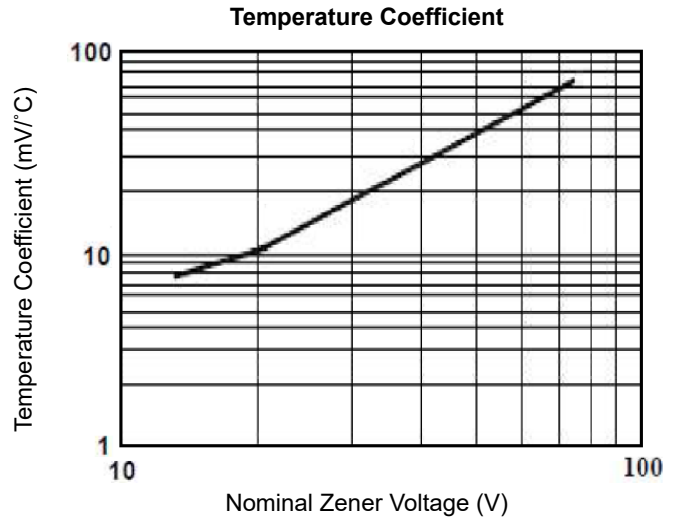
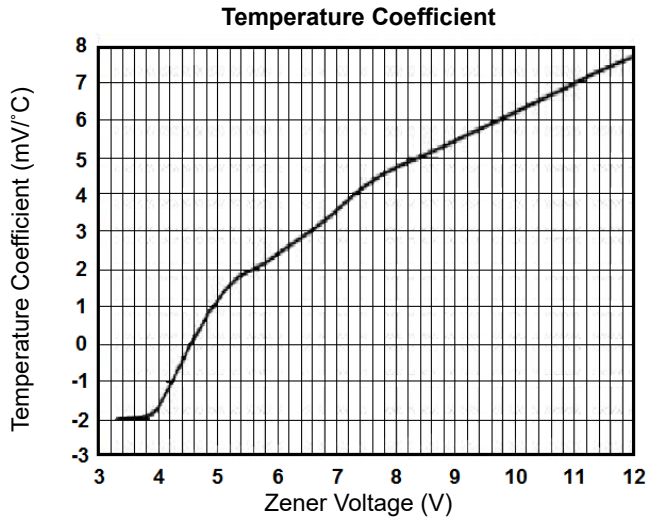
1. $T_A = 25^\circ\text{C}$ unless otherwise noted
2. Alumina=0.4x0.3x0.024inch, 99.5% alumina

Zener Diodes Array, Dual SOT-23 Common Cathode

BZX84C-CC Series

MERITEK

CHARACTERISTIC CURVES



*Specifications subject to change without notice.