

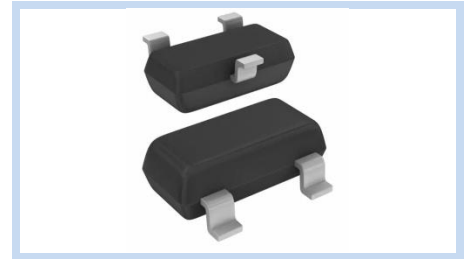
# Zener Diodes Array, Dual SOT-23, Common Anode

BZX84C-CA Series

**MERITEK**

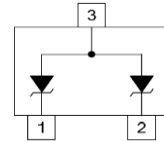
## FEATURE

- Zener Voltage Range: 2.4V to 51V
- Power Dissipation: 350mW
- Junction Temperature Range : -55 to +150°C
- Application: Power Management Systems, Voltage Regulation



## MECHANICAL DATA

- Case: SOT-23, Molded Plastic
- Terminals: Solderable Per MIL-STD-750, Method 2026

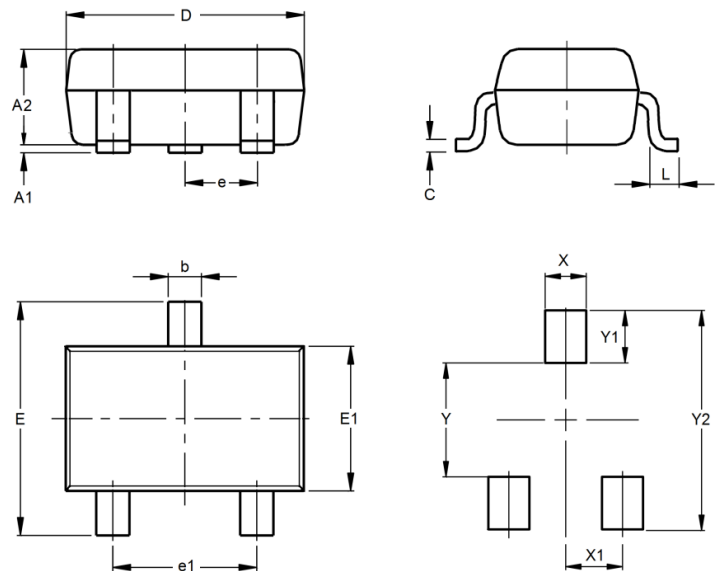


## ABSOLUTE MAXIMUM RATINGS

Parameter	Symbols	Value	Unit
Power Dissipation	$P_D$	350	mW
Forward Voltage	$V_F$	0.9	V
Resistance Junction to Ambient	$R_{\theta JA}$	357	°C/W
Junction Temperature Range	$T_J$	-55~+150	°C
Storage Temperature Range	$T_{STG}$	-55~+150	°C

## DIMENSIONS AND RECOMMENDED LAND PATTERN

Item	Min (mm)	Max (mm)
A1	0.00	0.10
A2	0.90	1.10
b	0.35	0.50
C	0.05	0.20
D	2.70	3.10
e	0.85	1.05
e1	1.70	2.10
E	2.20	2.60
E1	1.20	1.40
L	0.15	--
X	0.80	0.80
X1	0.95	0.95
Y	1.10	1.10
Y1	0.90	0.90
Y2	2.90	2.90



# Zener Diodes Array, Dual SOT-23, Common Anode

BZX84C-CA Series

MERITEK

## ELECTRICAL CHARACTERISTICS

Part Number	Nominal Zener Voltage $V_Z$ at $I_{ZT}$			Max Zener Impedance		Max Reverse Leakage Current	
	Nom	Min	Max	$Z_{ZT}$ at $I_{ZT}$	$I_{ZT}$	$I_R$ at $V_R$	
	(V)	(V)	(V)	( $\Omega$ )	(mA)	( $\mu$ A)	(V)
BZX84C2V4CA	2.4	2.2	2.6	100	5	50	1.0
BZX84C2V7CA	2.7	2.5	2.9	100	5	20	1.0
BZX84C3V0CA	3.0	2.8	3.2	95	5	10	1.0
BZX84C3V3CA	3.3	3.1	3.5	95	5	5.0	1.0
BZX84C3V6CA	3.6	3.4	3.8	90	5	5.0	1.0
BZX84C3V9CA	3.9	3.7	4.1	90	5	3.0	1.0
BZX84C4V3CA	4.3	4.0	4.6	90	5	3.0	1.0
BZX84C4V7CA	4.7	4.4	5.0	80	5	3.0	2.0
BZX84C5V1CA	5.1	4.8	5.4	60	5	2.0	2.0
BZX84C5V6CA	5.6	5.2	6.0	40	5	1.0	2.0
BZX84C6V2CA	6.2	5.8	6.6	10	5	3.0	4.0
BZX84C6V8CA	6.8	6.4	7.2	15	5	2.0	4.0
BZX84C7V5CA	7.5	7.0	7.9	15	5	1.0	5.0
BZX84C8V2CA	8.2	7.7	8.7	15	5	0.7	5.0
BZX84C9V1CA	9.1	8.5	9.6	15	5	0.5	6.0
BZX84C10CA	10	9.4	10.6	20	5	0.2	7.0
BZX84C11CA	11	10.4	11.6	20	5	0.1	8.0
BZX84C12CA	12	11.4	12.7	25	5	0.1	8.0
BZX84C13CA	13	12.4	14.1	30	5	0.1	8.0
BZX84C15CA	15	14.3	15.8	30	5	0.05	10.5
BZX84C16CA	16	15.3	17.1	40	5	0.05	11.2
BZX84C18CA	18	16.8	19.1	45	5	0.05	12.6
BZX84C20CA	20	18.8	21.2	55	5	0.05	14.0
BZX84C22CA	22	20.8	23.3	55	5	0.05	15.4
BZX84C24CA	24	22.8	25.6	70	5	0.05	16.8
BZX84C27CA	27	25.1	28.9	80	2	0.05	18.9
BZX84C30CA	30	28.0	32.0	80	2	0.05	21.0
BZX84C33CA	33	31.0	35.0	80	2	0.05	23.1
BZX84C36CA	36	34.0	38.0	90	2	0.05	25.2
BZX84C39CA	39	37.0	41.0	130	2	0.05	27.3
BZX84C43CA	43	40.0	46.0	150	2	0.05	30.1
BZX84C47CA	47	44.0	50.0	170	2	0.05	32.9
BZX84C51CA	51	48.0	54.0	180	2	0.05	35.7

Note:

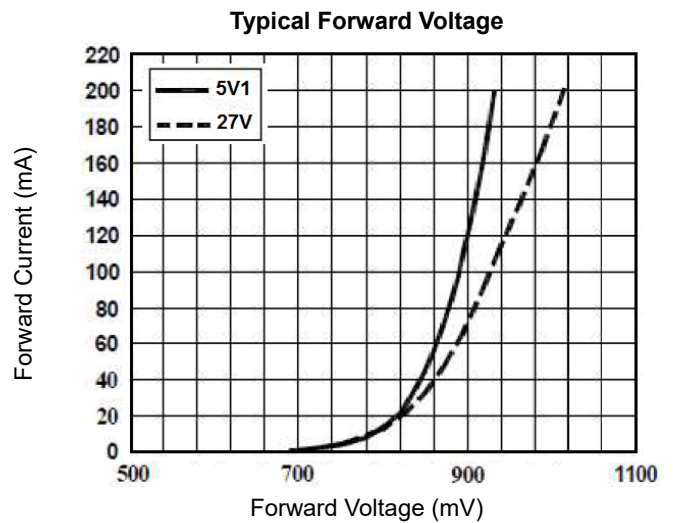
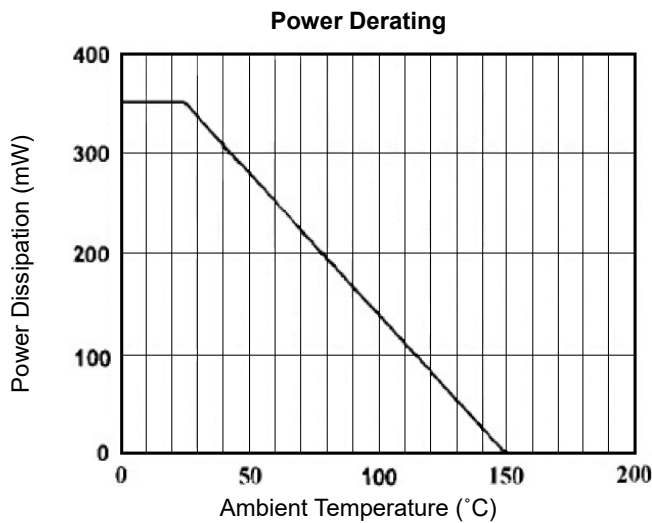
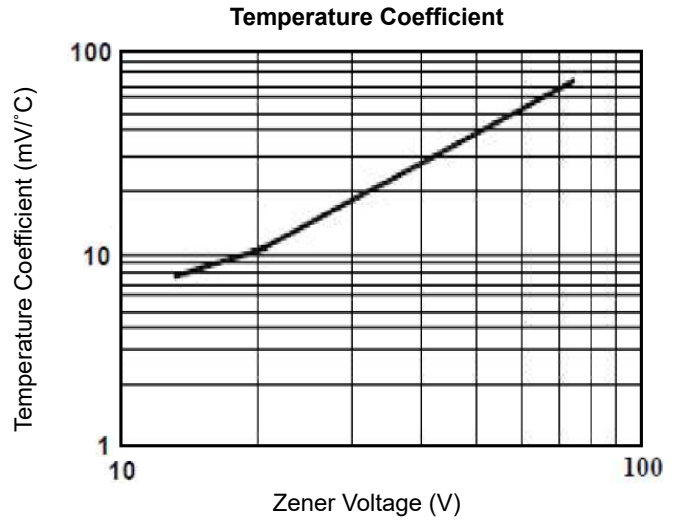
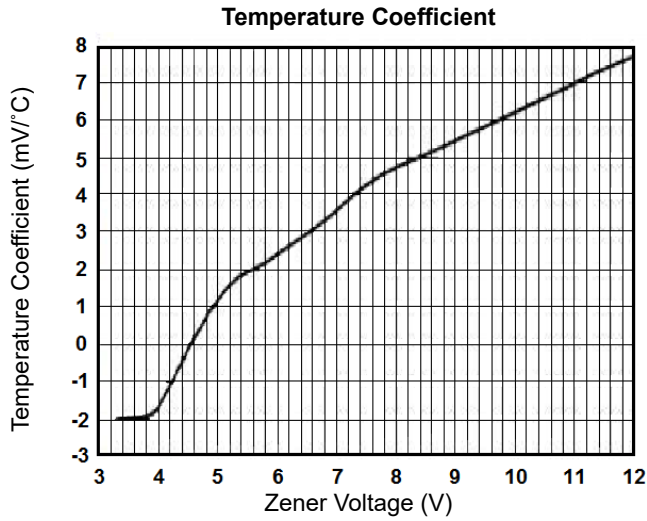
1.  $T_A = 25^\circ\text{C}$  unless otherwise noted
2. Alumina=0.4x0.3x0.024inch, 99.5% alumina
3. The Zener Voltage ( $V_Z$ ) is tested with pulses  $t_p=20\text{ms}$

# Zener Diodes Array, Dual SOT-23, Common Anode

BZX84C-CA Series

MERITEK

## CHARACTERISTIC CURVES



\*Specifications subject to change without notice.