

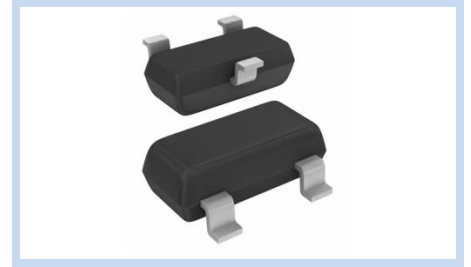
Zener Diodes, Array Dual SOT-23, AEC-Q101

AZ23C-A Series

MERITEK

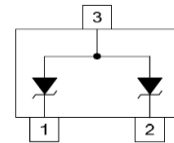
FEATURE

- Zener Voltage Range: 2.4V to 36V
- Zener Voltage Tolerance: $\pm 5\%$
- Power Dissipation: 300mW
- Silicon Planar Dual Zener Diode Common Anode Configuration
- Ideally Suited for Automated Assembly Processes
- Common Cathode Style Available See DZ Series
- AEC-Q101 Qualified



MECHANICAL DATA

- Case: SOT-23, Molded Plastic
- Terminals: Solderable Per MIL-STD-750, Method 2026



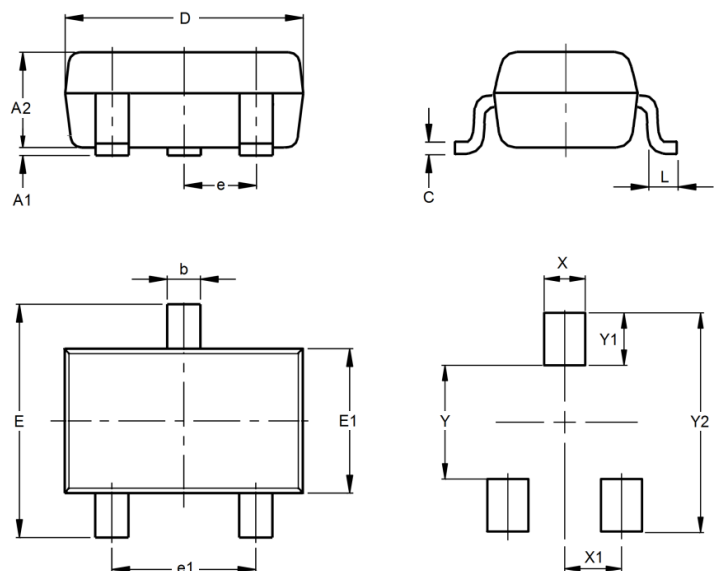
ABSOLUTE MAXIMUM RATINGS

Parameter	Symbols	Value	Unit
Power Dissipation	P_D	300	mW
Resistance Junction to Ambient	$R_{\theta JA}$	417	$^{\circ}C/W$
Junction Temperature	T_J	-55~+150	$^{\circ}C$
Storage Temperature Range	T_{STG}	-55~+150	$^{\circ}C$

Note: $T_A = 25^{\circ}C$ unless otherwise noted

DIMENSIONS AND RECOMMENDED LAND PATTERN

Item	Min (mm)	Max (mm)
A1	0.00	0.10
A2	0.90	1.10
b	0.35	0.50
C	0.08	0.2
D	2.80	3.04
e	0.90	0.90
e1	1.80	2.00
E	2.20	2.60
E1	1.20	1.40
L	0.15	--
X	0.80	0.80
X1	0.95	0.95
Y	1.10	1.10
Y1	0.90	0.90
Y2	2.90	2.90



Zener Diodes, Array Dual SOT-23, AEC-Q101

AZ23C-A Series

MERITEK

ELECTRICAL CHARACTERISTICS

Part Number	Nominal Zener Voltage V_Z at I_{ZT}			Max Zener Impedance Z_{ZT} at I_{ZT} , Z_{ZK} at $I_{ZK}=1mA$			Reverse Leakage Current I_R at V_R	
	Nom	Min	Max	Z_{ZT}	I_{ZT}	Z_{ZK}	I_R max	V_R
	(V)	(V)	(V)	(Ω)	(mA)	(Ω)	(μA)	(V)
AZ23C2V4-A	2.4	2.28	2.52	85	5.0	600	100	1.0
AZ23C2V7-A	2.7	2.57	2.84	83	5.0	600	75	1.0
AZ23C3V0-A	3.0	2.85	3.15	95	5.0	600	50	1.0
AZ23C3V3-A	3.3	3.14	3.47	95	5.0	600	25	1.0
AZ23C3V6-A	3.6	3.42	3.78	95	5.0	600	15	1.0
AZ23C3V9-A	3.9	3.71	4.10	95	5.0	600	10	1.0
AZ23C4V3-A	4.3	4.09	4.52	95	5.0	600	5.0	1.0
AZ23C4V7-A	4.7	4.47	4.94	78	5.0	500	5.0	1.0
AZ23C5V1-A	5.1	4.85	5.36	60	5.0	480	0.1	0.8
AZ23C5V6-A	5.6	5.32	5.88	40	5.0	400	0.1	1.0
AZ23C6V2-A	6.2	5.89	6.51	10	5.0	150	0.1	2.0
AZ23C6V8-A	6.8	6.46	7.14	8	5.0	80	0.1	3.0
AZ23C7V5-A	7.5	7.13	7.88	7	5.0	80	0.1	5.0
AZ23C8V2-A	8.2	7.79	8.61	7	5.0	80	0.1	6.0
AZ23C9V1-A	9.1	8.65	9.56	10	5.0	100	0.1	7.0
AZ23C10-A	10	9.50	10.50	15	5.0	150	0.1	7.5
AZ23C11-A	11	10.45	11.55	20	5.0	150	0.1	8.5
AZ23C12-A	12	11.40	12.60	20	5.0	150	0.1	9.0
AZ23C13-A	13	12.35	13.65	25	5.0	170	0.1	10.0
AZ23C15-A	15	14.25	15.75	30	5.0	200	0.1	11.0
AZ23C16-A	16	15.20	16.80	40	5.0	200	0.1	12.0
AZ23C18-A	18	17.10	18.90	50	5.0	225	0.1	14.0
AZ23C20-A	20	19.00	21.00	50	5.0	225	0.1	15.0
AZ23C22-A	22	20.90	23.10	55	5.0	250	0.1	17.0
AZ23C24-A	24	22.80	25.20	80	5.0	250	0.1	18.0
AZ23C27-A	27	25.65	28.35	80	5.0	300	0.1	20.0
AZ23C36-A	36	34.20	37.80	90	5.0	350	0.1	27.0

Note:

1. $T_A=25^{\circ}C$ unless otherwise noted
2. Mounted on $5mm^2$ (0.013mm thick) land areas
3. Measured on 8.3ms, single half sine-wave or equivalent square wave, duty cycle=4 pulses per min maximum

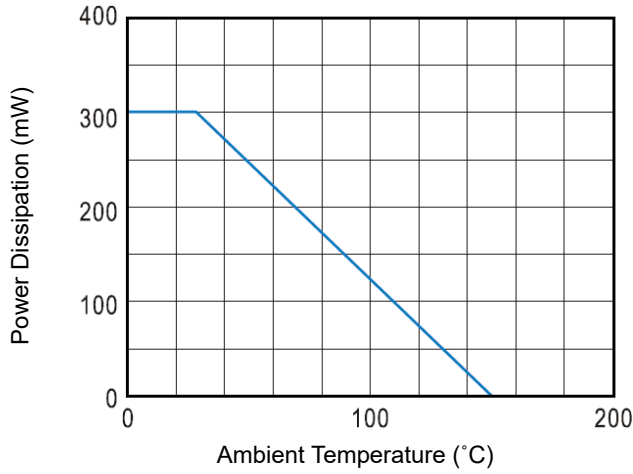
Zener Diodes, Array Dual SOT-23, AEC-Q101

AZ23C-A Series

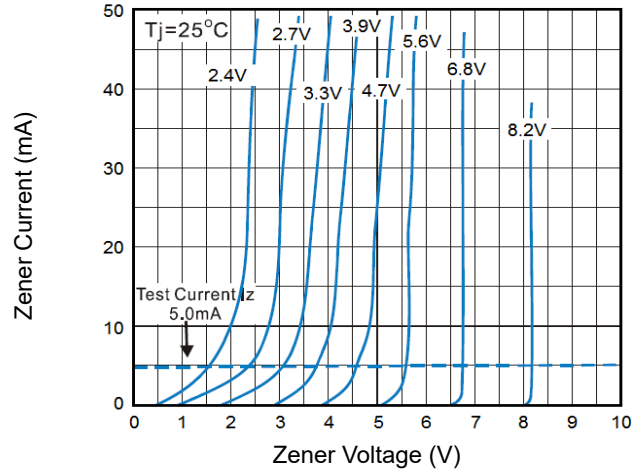
MERITEK

CHARACTERISTIC CURVES

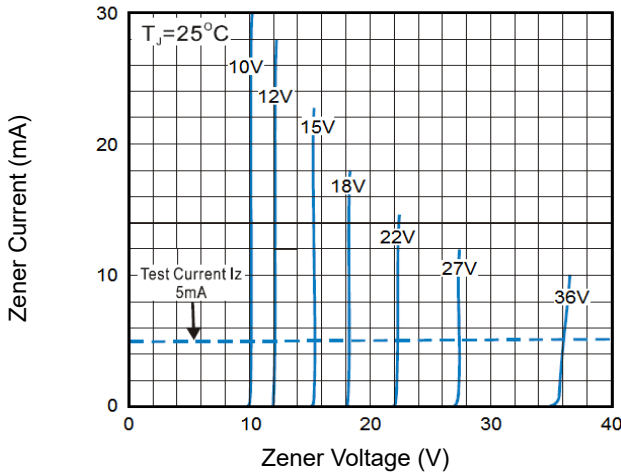
Power Derating



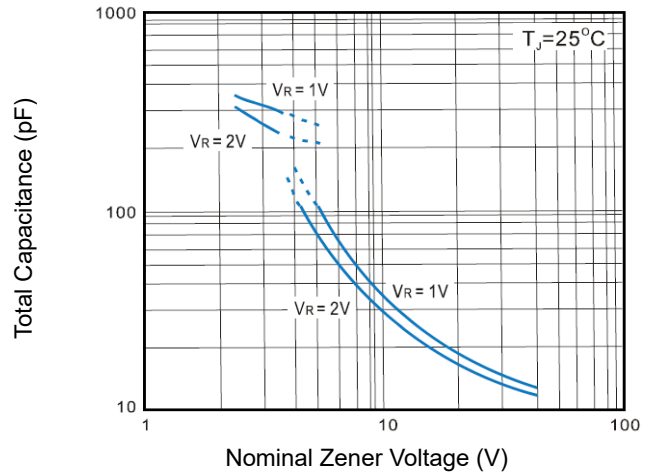
Zener Breakdown Characteristics



Zener Breakdown Characteristics



Total Capacitance vs Zener Voltage



*Specifications subject to change without notice.