

Switching Diodes

500mW SOD-123

1N4448W-A

MERITEK

FEATURE

- Power Dissipation: 500mW
- 100V Peak Reverse Voltage
- 150mA Average Forward Current
- Fast Switching Speed
- Electrically Identical to Standard JEDEC
- High Conductance
- AEC-Q101 Qualified



MECHANICAL DATA

- Case: SOD-123, Molded Plastic
- Terminals: Solderable per MIL-STD, Method 2026
- Polarity: Color Band Denotes Cathode End



MAXIMUM RATING



Parameter		Symbol	Value	Units
Reverse Voltage		V_R	75	V
Peak Reverse Voltage		V_{RM}	100	V
RMS Voltage		V_{RMS}	50	V
Forward Continuous		I_{FM}	500	mA
Maximum DC Blocking Voltage		V_{DC}	75	V
Maximum Average Forward Current at $T_A=25^{\circ}C$		$I_{F(AV)}$	150	mA
Peak Forward Surge Current, 1.0 μ s		I_{FSM}	4.0	A
Power Dissipation Derate above 25 $^{\circ}C$		P_{TOT}	500	mW
Maximum Forward Voltage	$I_F=5mA$	V_F	0.72	V
	$I_F=100mA$		1.00	V
Maximum DC Reverse Current at $V_R=75V$, $T_J=25^{\circ}C$		I_R	2.5	μA
Junction Capacitance		C_J	4.0	pF
Maximum Reverse Recovery		T_{RR}	4.0	ns
Typical Thermal Resistance		$R_{\theta JA}$	450	$^{\circ}C/W$
Operating and Storage Temperature Range		T_J, T_{STG}	-55~150	$^{\circ}C$

Note:

1. $T_J = 25^{\circ}C$ unless otherwise specified.

2. C_J at $V_R=0$, $f=1MHz$.

3. From $I_F=10mA$ to $I_R=1mA$, $V_R=6V$, $R_L=100\Omega$.

Switching Diodes

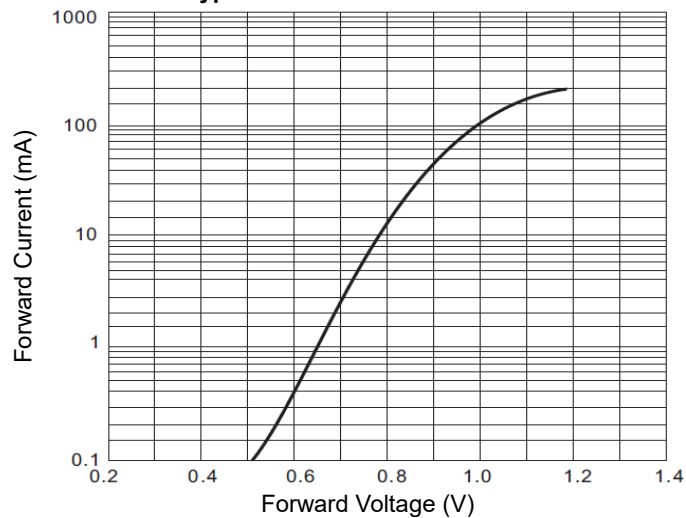
500mW SOD-123

1N4448W-A

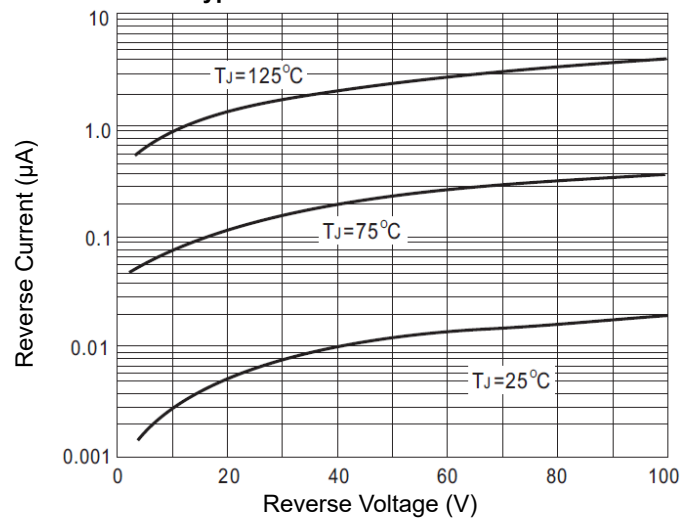
MERITEK

CHARACTERISTIC CURVES

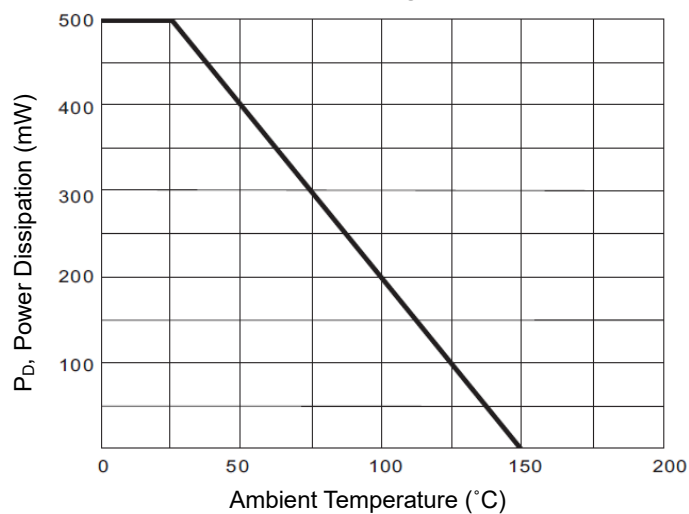
Typical Forward Characteristics



Typical Reverse Characteristics



Power Derating Curve



Switching Diodes

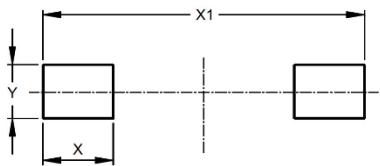
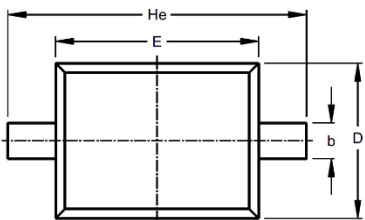
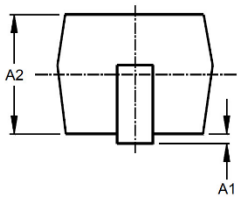
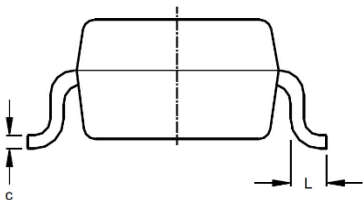
500mW SOD-123

1N4448W-A

MERITEK

DIMENSIONS

SOD-123	Min (mm)	Max (mm)
A1	-	0.12
A2	0.95	1.35
b	0.50	0.70
C	-	0.20
D	1.40	1.80
E	2.50	2.80
He	3.60	3.90
L	0.40	-
X	0.97	
X1	4.25	
Y	1.22	



*Specifications subject to change without notice.