

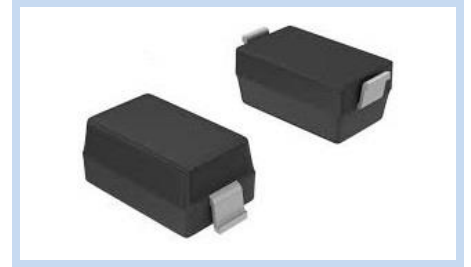
Zener Diodes, AEC-Q101 4.3~43V 500mW SOD-123

MMSZ46x~47x-A

MERITEK

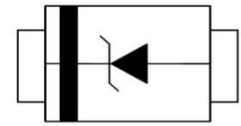
FEATURE

- Zener Voltage Range: 4.3V to 43V
- Power Dissipation: 500mW
- Silicon Planar Zener Diode in SOD-123 package
- Ideally Suited for Automated Assembly Processes
- Application: Power Management Systems, Voltage Regulation
- AEC-Q101 Qualified



MECHANICAL DATA

- Case: SOD-123, Molded Plastic
- Terminals: Solderable per MIL-STD-750, Method 2026
- Polarity: Band Marking denotes cathode end



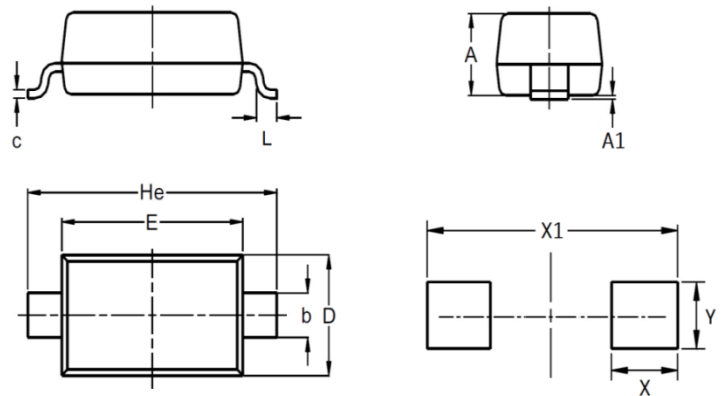
MAXIMUM RATINGS (TA=25 °C unless otherwise noted)



Parameter	Symbols	Value	Unit
Power Dissipation	P_D	500	mW
Resistance Junction to Ambient	$R_{\theta JA}$	540	°C/W
Resistance Junction to Case	$R_{\theta JC}$	170	°C/W
Junction Temperature	T_J	-55~+150	°C
Storage Temperature Range	T_{STG}	-55~+150	°C

DIMENSIONS AND RECOMMENDED LAND PATTERN

Item	Min (mm)	Max (mm)
A	0.95	1.35
A1	-	0.12
b	0.50	0.70
C	-	0.20
D	1.40	1.80
E	2.50	2.80
He	3.60	3.90
L	0.40	-
X	0.97	0.97
X1	3.60	3.90
Y	1.22	1.22



Zener Diodes, AEC-Q101

4.3~43V 500mW SOD-123

MMSZ46x~47x-A

MERITEK

ELECTRICAL CHARACTERISTICS (TA=25 °C unless otherwise noted)

Part Number	Nominal Zener Voltage			Reverse Leakage Current		
	V _Z at I _{ZT}			I _{ZT}	I _R max	at V _R
	Nom (V)	Min (V)	Max (V)	(mA)	(μA)	(V)
MMSZ4687-A	4.3	4.09	4.52	0.05	4.0	2.0
MMSZ4688-A	4.7	4.47	4.94	0.05	10	3.0
MMSZ4689-A	5.1	4.85	5.36	0.05	10	3.0
MMSZ46895-A	5.3	5.03	5.57	0.05	10	4.0
MMSZ4690-A	5.6	5.32	5.88	0.05	10	4.0
MMSZ4691-A	6.2	5.89	6.51	0.05	10	5.0
MMSZ4692-A	6.8	6.46	7.14	0.05	10	5.1
MMSZ4694-A	8.2	7.79	8.61	0.05	1.0	6.2
MMSZ4696-A	9.1	8.65	9.56	0.05	1.0	6.9
MMSZ4697-A	10	9.50	10.50	0.05	1.0	7.6
MMSZ4699-A	12	11.40	12.60	0.05	0.05	9.1
MMSZ4700-A	13	12.40	13.70	0.05	0.05	9.8
MMSZ4701-A	14	13.30	14.70	0.05	0.05	10.6
MMSZ4702-A	15	14.30	15.80	0.05	0.05	11.4
MMSZ4703-A	16	15.20	16.80	0.05	0.05	12.1
MMSZ4704-A	17	16.20	17.90	0.05	0.05	12.9
MMSZ4705-A	18	17.10	18.90	0.05	0.05	13.6
MMSZ4707-A	20	19.00	21.00	0.05	0.01	15.2
MMSZ4708-A	22	20.90	23.10	0.05	0.01	16.7
MMSZ4709-A	24	22.80	25.20	0.05	0.01	18.2
MMSZ4710-A	25	23.80	26.30	0.05	0.01	19.0
MMSZ4711-A	27	25.70	28.40	0.05	0.01	20.4
MMSZ4712-A	28	26.60	29.40	0.05	0.01	21.2
MMSZ4713-A	30	28.50	31.50	0.05	0.01	22.8
MMSZ4714-A	33	31.40	34.70	0.05	0.01	25.0
MMSZ4715-A	36	34.20	37.80	0.05	0.01	27.3
MMSZ4717-A	43	40.90	45.20	0.05	0.01	32.6

Notes:

1. Device mounted on an infinite heatsink.
2. Device mounted on a single-sided copper, mini pad.

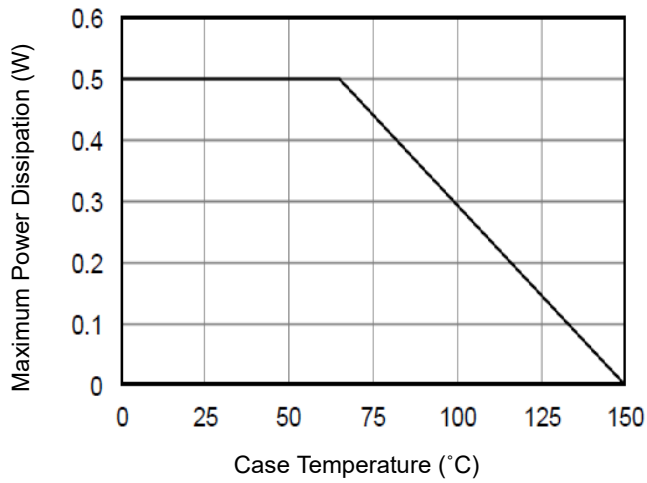
Zener Diodes, AEC-Q101 4.3~43V 500mW SOD-123

MMSZ46x~47x-A

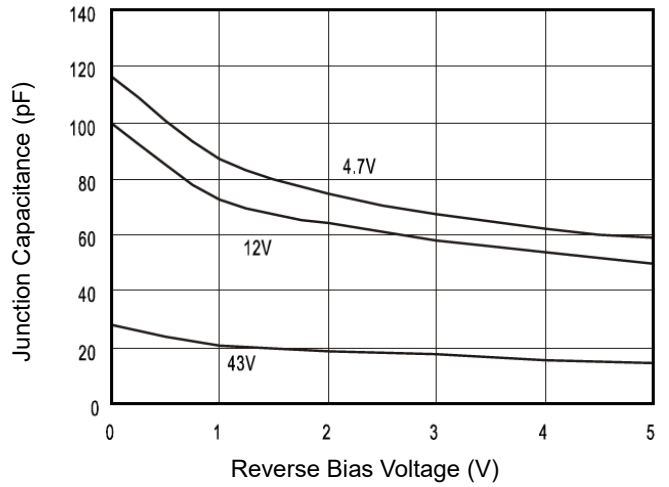
MERITEK

CHARACTERISTIC CURVES

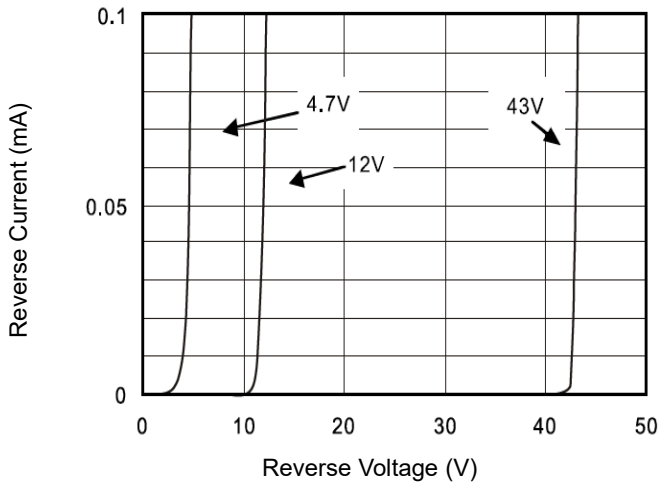
Power Derating



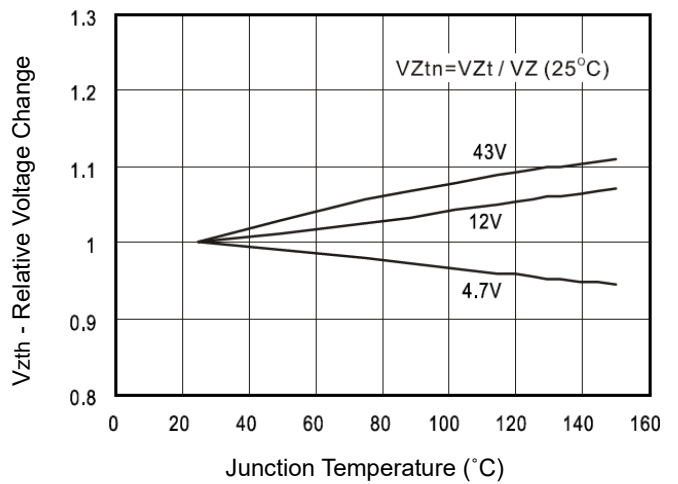
Typical Junction Capacitance



Typical Reverse Characteristics



Zener Voltage Change vs Junction Temperature



*Specifications subject to change without notice.