

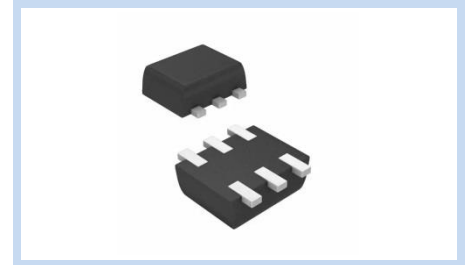
ESD Suppressor 5V 5-Unidirectional SOT-563

ME55U9V8S563

MERITEK

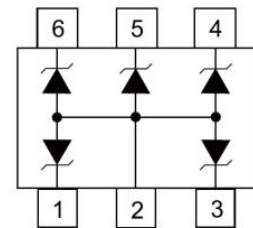
FEATURE

- IEC 61000-4-2 ESD: $\pm 30\text{KV}$ (Air) $\pm 30\text{KV}$ (Contact)
- ESD Protection for five Unidirectional Channels
- Low Leakage Current
- Low Clamping
- Solid-State Silicon-Avalanche Technology



APPLICATION

- Personal Digital Assistants (PDA's) and Pagers
- Notebook, Laptop, and Palmtop Computers
- Microprocessor Based Equipment
- PC Desktops And Servers
- Portable Instrumentation



MAXIMUM RATINGS AND CHARACTERISTICS

Parameter	Symbol	Value	Unit
ESD Voltage (Contact discharge)	V_{ESD}	± 30	KV
ESD Voltage (Air discharge)		± 30	
Peak Pulse Power ($t_p=8/20\mu s$)	P_{PP}	100	W
Lead Soldering Temperature	T_L	260	$^{\circ}\text{C}$
Operating & Storage Temperature Range	T_J, T_{STG}	-55~+150	$^{\circ}\text{C}$

ELECTRICAL CHARACTERISTICS

Parameter	Condition	Symbol	Min.	Typ.	Max.	Unit
Reverse Stand-Off Voltage	--	V_{RWM}	--	--	5	V
Reverse Breakdown Voltage	$I_{BR}=1\text{mA}$	V_{BR}	6	--	--	V
Reverse Leakage Current	$V_R=5\text{V}$, Each I/O pin	I_R	--	--	1	μA
Clamping Voltage	$I_{PP}=1\text{A}$, $t_p=8/20\mu s$	V_C	--	--	9.8	V
	$I_{PP}=5\text{A}$, $t_p=8/20\mu s$		--	--	18.5	
Off State Junction Capacitance	$V_{dc}=0$, $f=1\text{MHz}$, Between I/O pins and GND	C_J	--	30	--	pF

Notes:

1. $T_J=25^{\circ}\text{C}$ unless otherwise specified

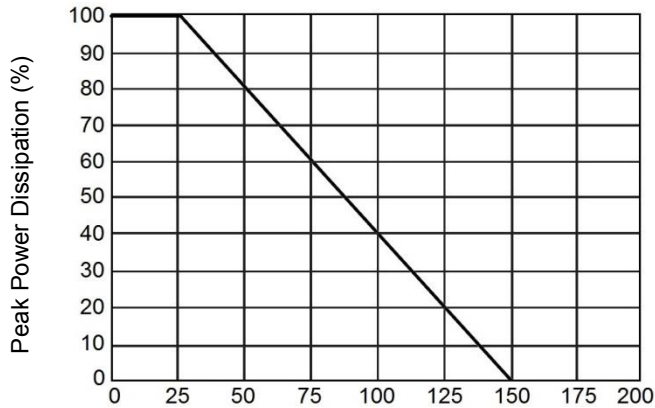
ESD Suppressor 5V 5-Unidirectional SOT-563

ME55U9V8S563

MERITEK

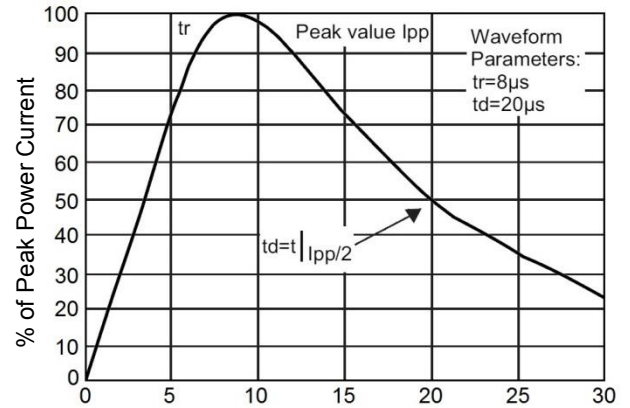
CHARACTERISTIC CURVES

Power Derating Curve



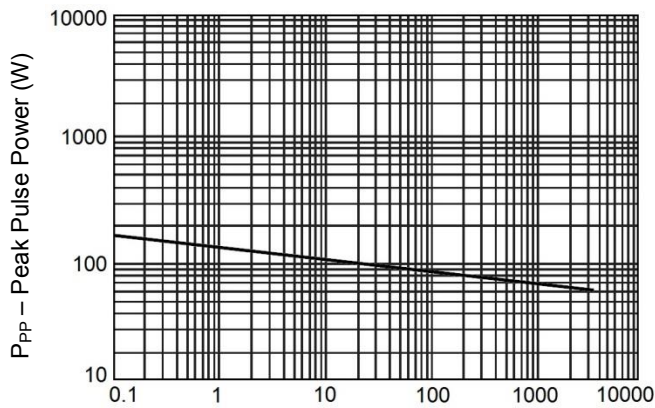
T_A – Ambient Temperature (°C)

Pulse Waveforms



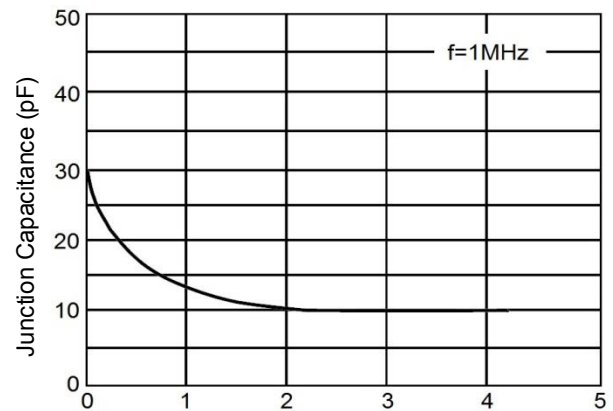
t – Time (µs)

Non-Repetitive Peak Pulse vs. Pulse Time



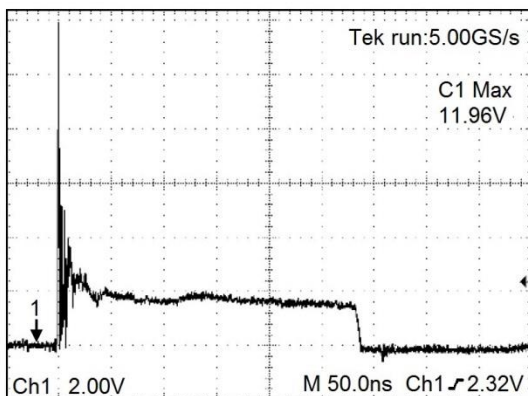
t_p – Pulse Duration (µs)

Normalized Capacitance vs. Reverse Voltage

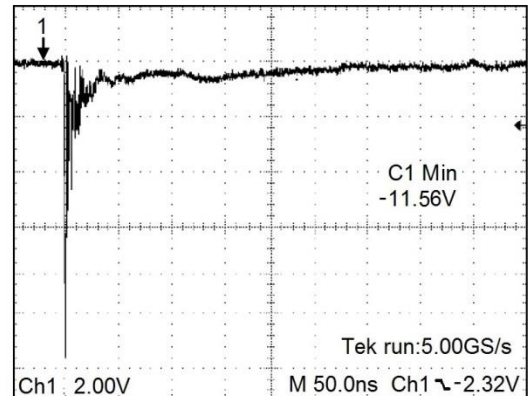


V_{BR} – Reverse Voltage (V)

ESD Clamping (8kV Contact per IEC61000-4-2)



ESD Clamping (-8kV Contact per IEC61000-4-2)



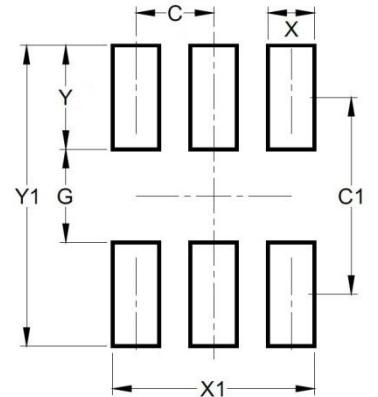
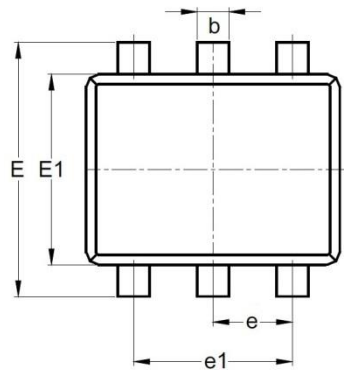
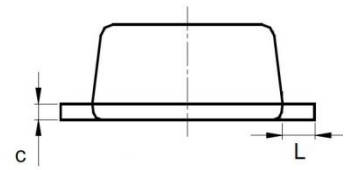
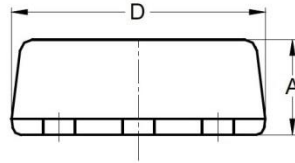
ESD Suppressor 5V 5-Unidirectional SOT-563

ME55U9V8S563

MERITEK

DIMENSIONS AND RECOMMENDED LAND PATTERN

Item	Min (mm)	Max (mm)
A	0.50	0.60
b	0.17	0.27
c	0.08	0.18
D	1.50	1.70
e	0.50	0.50
e1	1.00	1.00
E	1.50	1.70
E1	1.10	1.30
L	0.10	0.30
C	0.50	0.50
C1	1.30	1.30
G	0.60	0.60
X	0.30	0.30
X1	1.30	1.30
Y	0.67	0.67
Y1	2.00	2.00



*Specifications subject to change without notice.