

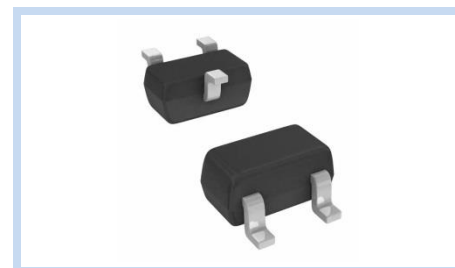
ESD Suppressor 5V 2-Bidirectional SOT-523

ME52B16S523GT

MERITEK

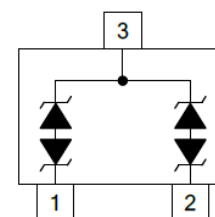
FEATURE

- IEC 61000-4-2 ESD: $\pm 15\text{KV}$ (Air) $\pm 8\text{KV}$ (Contact)
- ESD Protection for two Bidirectional Channels
- Low Leakage Current
- Clamping Voltage
- Low Capacitance
- Solid-State Silicon-Avalanche Technology



APPLICATION

- HDMI Interface Protection
- USB 2.0 & Firewire Ports
- Infiniband Transceiver Protection
- Gaas Photodetector Protection
- RF/Antenna Circuits



MAXIMUM RATINGS AND CHARACTERISTICS

Parameter	Symbol	Value	Unit
ESD Voltage (Contact discharge)	V_{ESD}	± 8	KV
ESD Voltage (Air discharge)		± 15	
Operating & Storage Temperature Range	T_J, T_{STG}	-55~+150	$^{\circ}\text{C}$

ELECTRICAL CHARACTERISTICS

Parameter	Condition	Symbol	Min.	Typ.	Max.	Unit
Reverse Stand-Off Voltage	--	V_{RWM}	--	--	5	V
Reverse Breakdown Voltage	$I_{BR}=1\text{mA}$	V_{BR}	6	--	--	V
Reverse Leakage Current	$V_R=5\text{V}$, Each I/O pin	I_R	--	--	1	μA
Clamping Voltage	$I_{PP}=1\text{A}$, $t_p=8/20\mu\text{s}$	V_C	--	--	16	V
Off State Junction Capacitance	$V_{dc}=0$, $f=1\text{MHz}$, Between I/O pins and GND	C_J	--	10	--	pF

Notes:

1. $T_J=25^{\circ}\text{C}$ unless otherwise specified

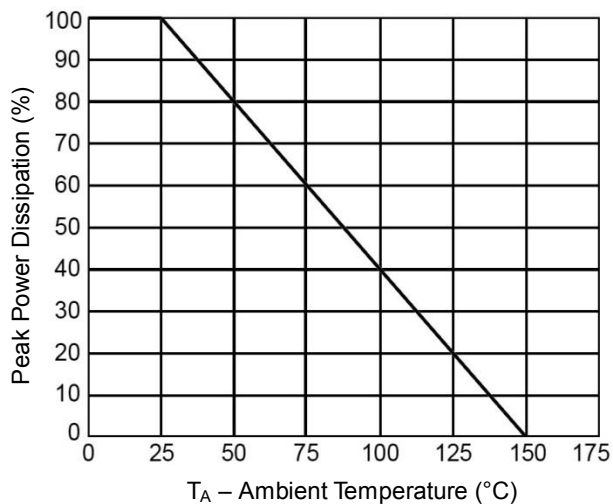
ESD Suppressor 5V 2-Bidirectional SOT-523

ME52B16S523GT

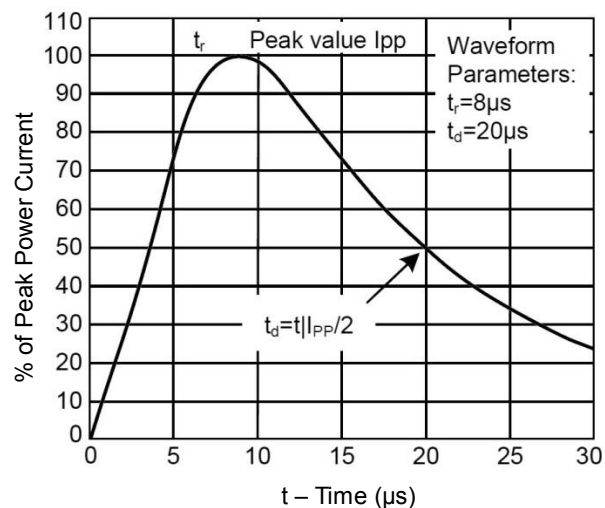
MERITEK

CHARACTERISTIC CURVES

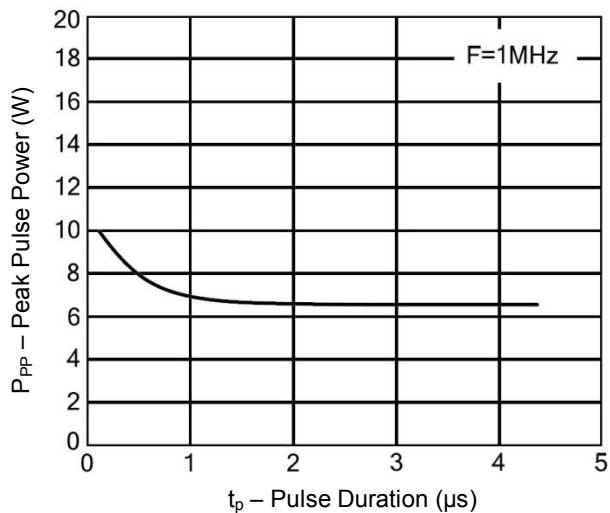
Power Derating Curve



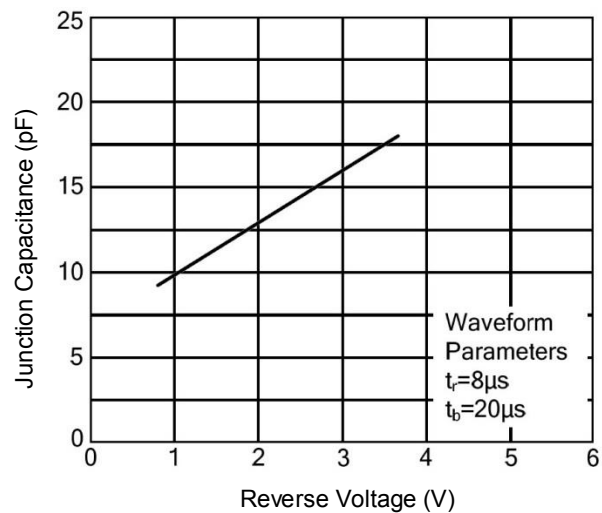
Pulse Waveforms



Non-Repetitive Peak Pulse vs. Pulse Time



Normalized Capacitance vs. Reverse Voltage



ESD Suppressor

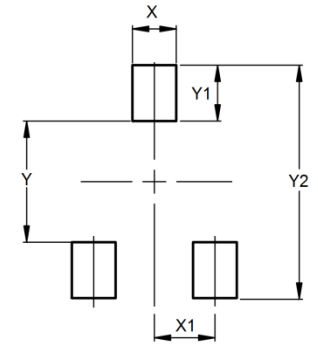
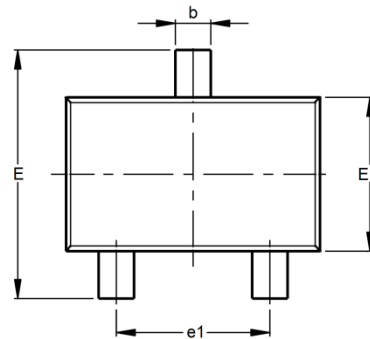
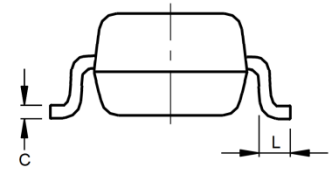
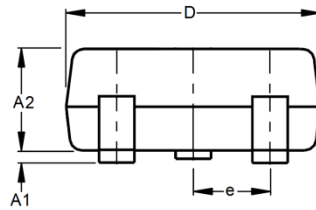
5V 2-Bidirectional SOT-523

ME52B16S523GT

MERITEK

DIMENSIONS AND RECOMMENDED LAND PATTERN

Item	Min (mm)	Max (mm)
A1	-	0.10
A2	-	0.80
b	0.15	0.35
C	0.10	0.20
D	1.50	1.70
e	0.50	0.50
e1	0.90	1.10
E	1.45	1.75
E1	0.75	0.85
L	0.28	0.44
X	0.50	0.50
X1	0.65	0.65
Y	1.15	1.15
Y1	0.50	0.50
Y2	1.75	1.75



*Specifications subject to change without notice.