

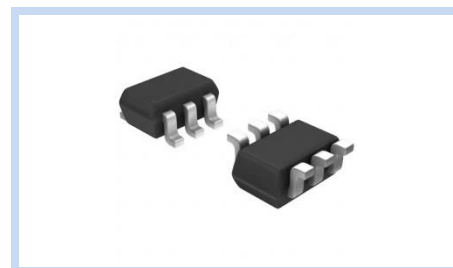
# ESD Suppressor AEC-Q101 5V 5-Unidirectional SOT-363

ME55U9V8S363A

MERITEK

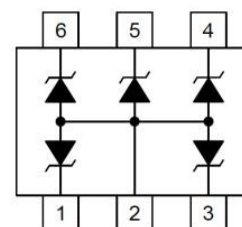
## FEATURE

- IEC 61000-4-2 ESD:  $\pm 15\text{KV}$  (Air)  $\pm 8\text{KV}$  (Contact)
- ESD Protection for five Unidirectional Channels
- Low Operating Voltage
- Clamping Voltage
- Low Leakage Current
- Solid-State Silicon-Avalanche Technology
- AEC-Q101 Qualified



## APPLICATION

- Cell Phone Handsets And Accessories
- Personal Digital Assistants (PDA's)
- Servers, Notebook And Desktop PC
- Set Top Box (STB)
- Digital Cameras



## MAXIMUM RATINGS AND CHARACTERISTICS

Parameter	Symbol	Value	Unit
ESD Voltage (Contact discharge)	$V_{ESD}$	$\pm 8$	KV
ESD Voltage (Air discharge)		$\pm 15$	
Peak Pulse Power ( $t_p=8/20\mu s$ )	$P_{PP}$	100	W
Operating & Storage Temperature Range	$T_J, T_{STG}$	-55~+150	$^{\circ}\text{C}$

## ELECTRICAL CHARACTERISTICS

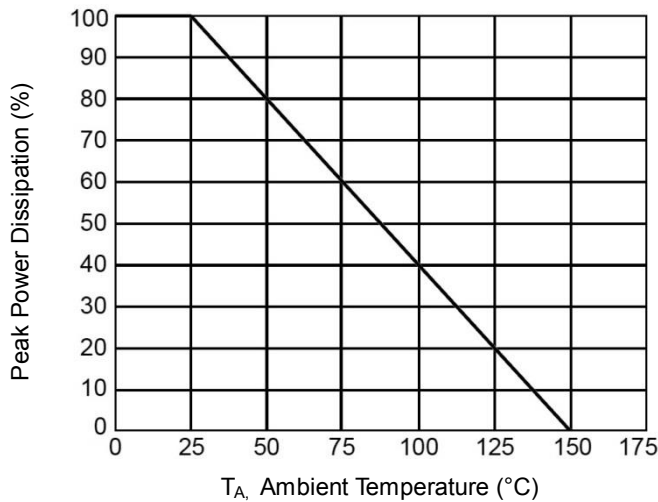
Parameter	Condition	Symbol	Min.	Typ.	Max.	Unit
Reverse Stand-Off Voltage	--	$V_{RWM}$	--	--	5	V
Reverse Breakdown Voltage	$I_{BR}=1\text{mA}$	$V_{BR}$	6	--	--	V
Reverse Leakage Current	$V_R=5\text{V}$ , Each I/O pin	$I_R$	--	--	5	$\mu\text{A}$
Clamping Voltage	$I_{PP}=1\text{A}$ , $t_p=8/20\mu s$	$V_C$	--	--	9.8	V
Off State Junction Capacitance	$V_{dc}=0$ , $f=1\text{MHz}$ , Between I/O pins and GND	$C_J$	--	--	50	pF

Notes:

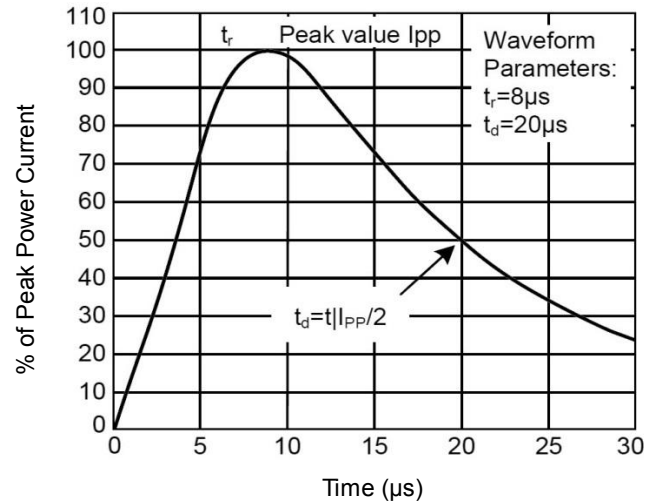
1.  $T_J=25^{\circ}\text{C}$  unless otherwise specified

## CHARACTERISTIC CURVES

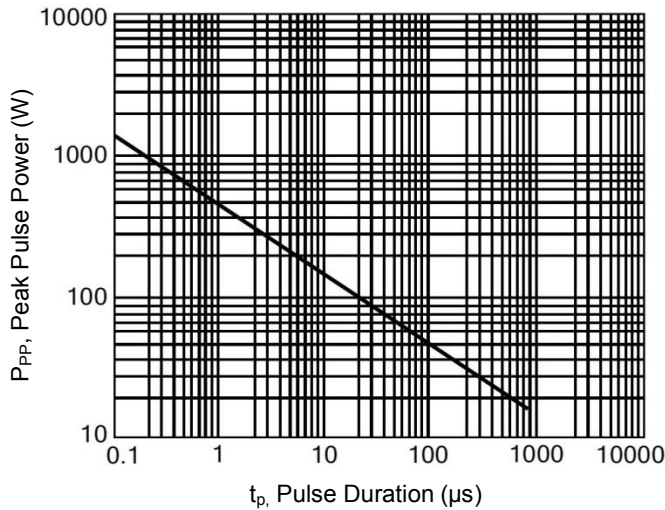
Power Derating Curve



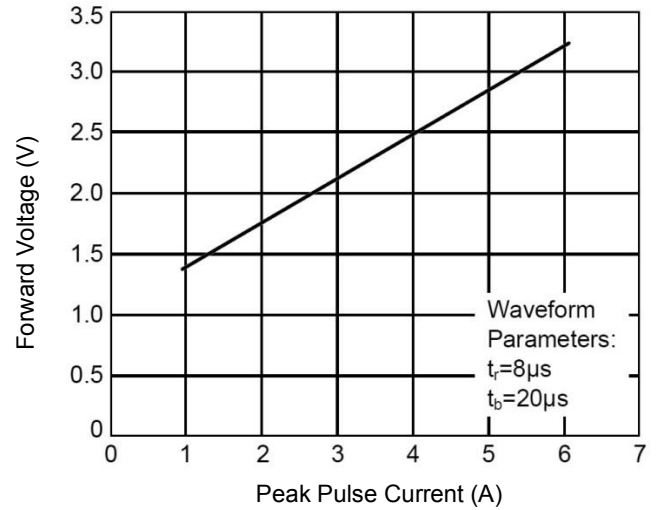
Pulse Waveforms



Non-Repetitive Peak Pulse vs. Pulse Time



Forward Voltage vs. Forward Current



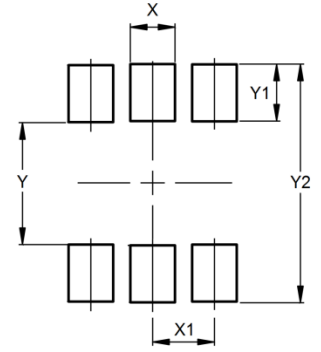
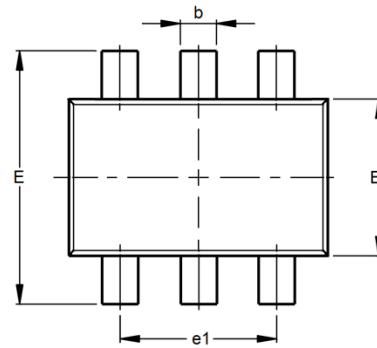
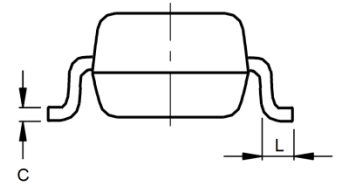
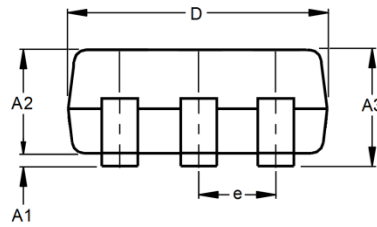
# ESD Suppressor AEC-Q101 5V 5-Unidirectional SOT-363

ME55U9V8S363A

MERITEK

## DIMENSIONS AND RECOMMENDED LAND PATTERN

Item	Min (mm)	Max (mm)
A1	0.00	0.10
A2	0.80	0.90
A3	0.80	1.00
b	0.15	0.30
C	0.10	0.25
D	1.85	2.15
e	0.65	0.65
e1	1.30	1.30
E	1.90	2.30
E1	1.10	1.40
L	0.25	-
Y	1.25	1.25
Y1	0.60	0.60
Y2	2.30	2.30
X	0.42	0.42
X1	0.65	0.65



\*Specifications subject to change without notice.