

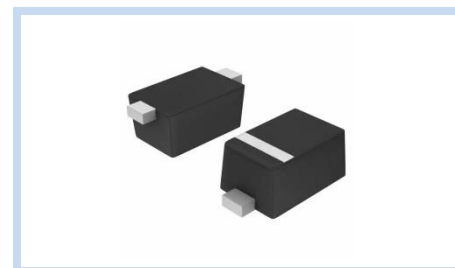
ESD Suppressor 5V Unidirectional SOD-523

ME51U8S523

MERITEK

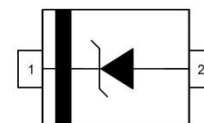
FEATURE

- IEC 61000-4-2 ESD: $\pm 30\text{KV}$ (Air) $\pm 30\text{KV}$ (Contact)
- IEC 61000-4-4 EFT: 40A (5/50ns)
- IEC 61000-4-5 Lightning: 13A (8/20 μs)
- ESD Protection for one Unidirectional Channel
- Low Clamping Voltage



APPLICATION

- Cellular Handsets & Accessories
- Personal Digital Assistants (PDAs)
- Notebooks & Handhelds
- Cordless Phones
- Peripherals
- MP3 Players



MAXIMUM RATINGS AND CHARACTERISTICS

Parameter	Symbol	Value	Unit
ESD Voltage (Contact discharge)	V_{ESD}	± 30	KV
ESD Voltage (Air discharge)		± 30	
Typical Thermal Resistance	$R_{\theta JA}$	710	$^{\circ}\text{C}/\text{W}$
Operating & Storage Temperature Range	T_J, T_{STG}	-55~+150	$^{\circ}\text{C}$

ELECTRICAL CHARACTERISTICS

Parameter	Condition	Symbol	Min.	Typ.	Max.	Unit
Reverse Stand-Off Voltage	--	V_{RWM}	--	--	5	V
Reverse Breakdown Voltage	$I_{BR}=1\text{mA}$	V_{BR}	6	--	7.5	V
Reverse Leakage Current	$V_R=5\text{V}$	I_R	--	--	1	μA
Clamping Voltage	$I_{PP}=1\text{A}, t_p=8/20\mu\text{s}$	V_C	--	--	8	V
	$I_{PP}=13\text{A}, t_p=8/20\mu\text{s}$		--	--	11	
Off State Junction Capacitance	$V_{dc}=0, f=1\text{MHz}$	C_J	--	--	120	pF

Notes:

1. $T_A=25^{\circ}\text{C}$ unless specified otherwise
2. Mounted on a FR4 P.C.B., single sided copper, mini-pad.
3. A transient suppressor is selected according to the working peak reverse voltage (V_{RWM}), which should be greater than or equal to the DC or continuous peak operation voltage level.

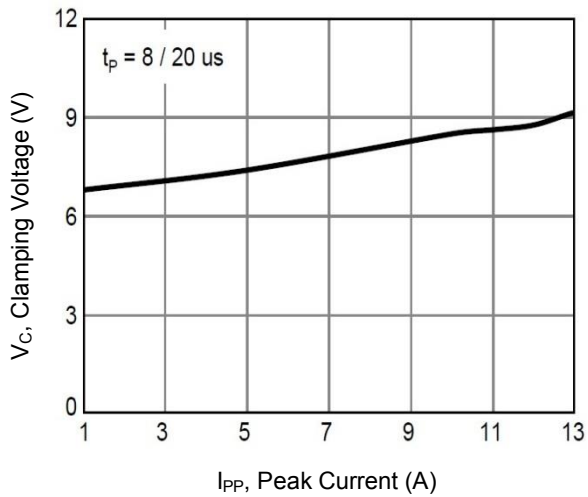
ESD Suppressor 5V Unidirectional SOD-523

ME51U8S523

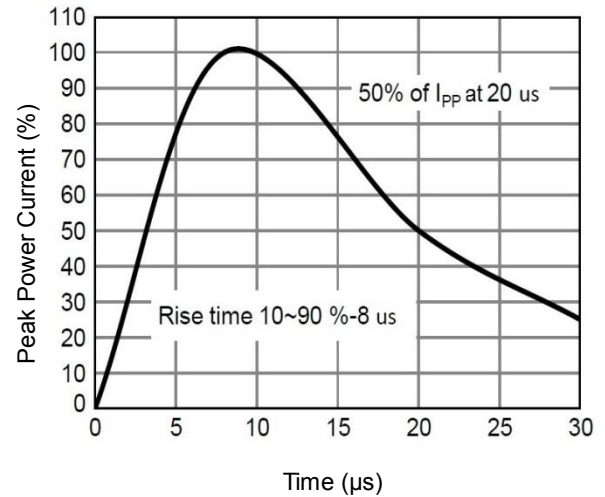
MERITEK

CHARACTERISTIC CURVES

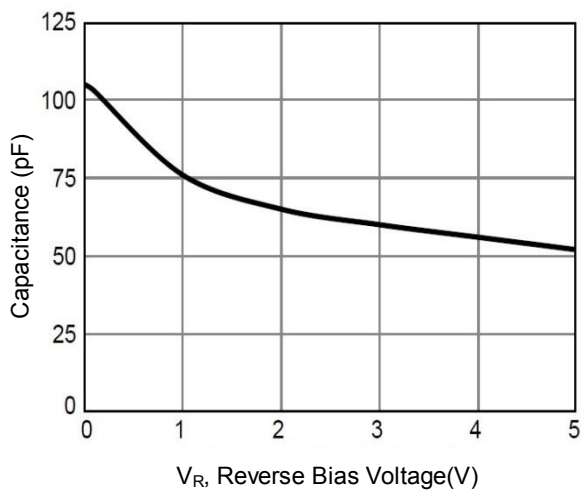
Typical Peak Clamping Voltage



Pulse Waveforms



Typical Junction Capacitance



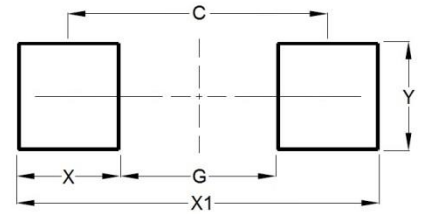
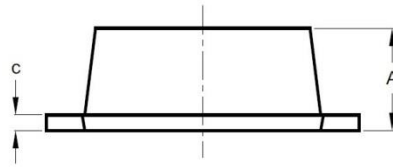
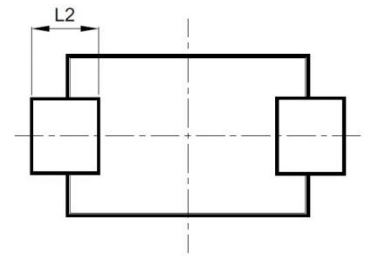
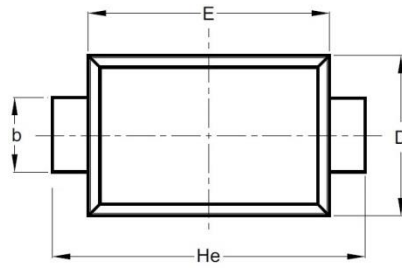
ESD Suppressor 5V Unidirectional SOD-523

ME51U8S523

MERITEK

DIMENSIONS AND RECOMMENDED LAND PATTERN

Item	Min (mm)	Max (mm)
A	0.55	0.65
b	0.25	0.35
C	0.05	0.15
D	0.75	0.85
E	1.15	1.25
He	1.50	1.70
L2	0.20	0.20
C	1.40	1.40
G	0.80	0.80
X	0.60	0.60
X1	2.00	2.00
Y	0.70	0.70



*Specifications subject to change without notice.