

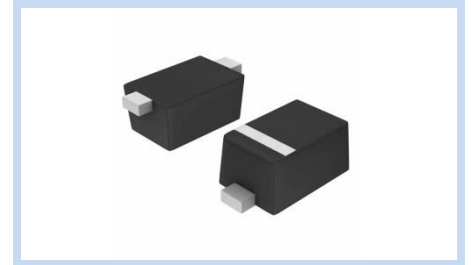
ESD Suppressor 5V Unidirectional SOD-523

ME51U25S523

MERITEK

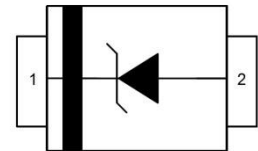
FEATURE

- IEC 61000-4-2 ESD: $\pm 15\text{KV}$ (Air) $\pm 8\text{KV}$ (Contact)
- ESD Protection for one Unidirectional Channel
- Low Leakage Current
- Low Clamping Voltage



APPLICATION

- USB 3.0/USB 2.0
- Set Top Boxes, Game Consoles
- External Storage
- Smart Phones
- MHL/MIPI/MDDI
- HDMI, Video Port, eSATA



MAXIMUM RATINGS AND CHARACTERISTICS

Parameter	Symbol	Value	Unit
ESD Voltage (Contact discharge)	V_{ESD}	± 8	KV
ESD Voltage (Air discharge)		± 15	
Peak Pulse Current ($t_p=8/20\mu s$)	I_{PP}	3	A
Operating & Storage Temperature Range	T_J, T_{STG}	-55~+150	$^{\circ}\text{C}$

ELECTRICAL CHARACTERISTICS

Parameter	Condition	Symbol	Min.	Typ.	Max.	Unit
Reverse Stand-Off Voltage	--	V_{RWM}	--	--	5	V
Reverse Breakdown Voltage	$I_{BR}=1\text{mA}$	V_{BR}	6	--	8.5	V
Reverse Leakage Current	$V_R=5\text{V}$	I_R	--	--	1	μA
Clamping Voltage	$I_{PP}=3\text{A}, t_p=8/20\mu s$	V_C	--	--	25	V
Off State Junction Capacitance	$V_{dc}=0, f=1\text{MHz}$	C_J	--	0.8	--	pF

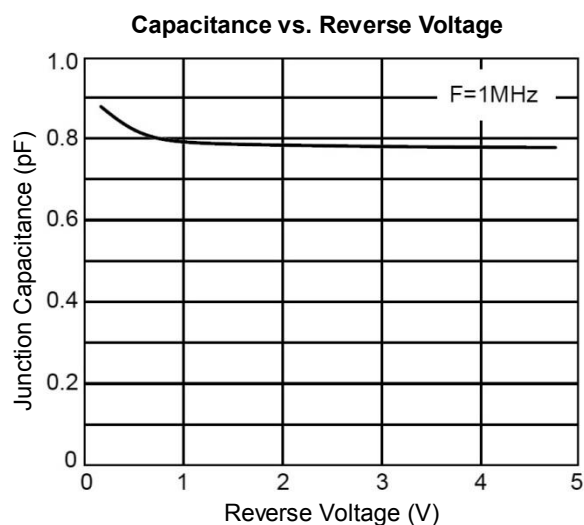
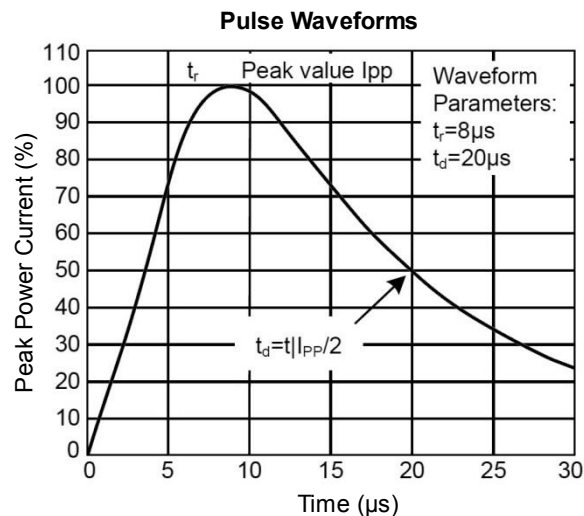
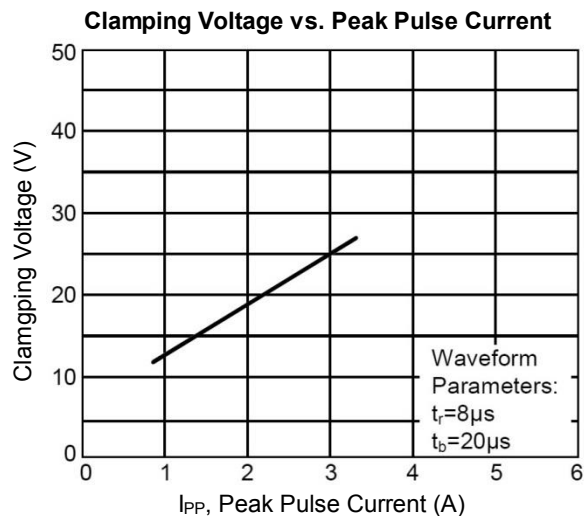
Notes: $T_J=25^{\circ}\text{C}$ unless otherwise specified

ESD Suppressor 5V Unidirectional SOD-523

ME51U25S523

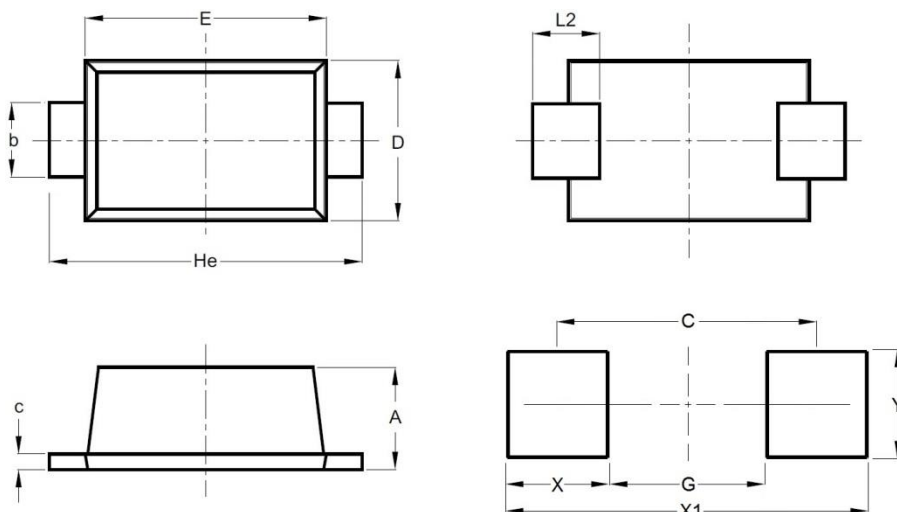
MERITEK

CHARACTERISTIC CURVES



DIMENSIONS AND RECOMMENDED LAND PATTERN

Item	Min (mm)	Max (mm)
A	0.50	0.70
b	0.25	0.35
C	0.07	0.20
D	0.70	0.90
E	1.10	1.30
He	1.50	1.70
L2	0.15	0.25
C	1.40	1.40
G	0.80	0.80
X	0.60	0.60
X1	2.00	2.00
Y	0.70	0.70



*Specifications subject to change without notice.