

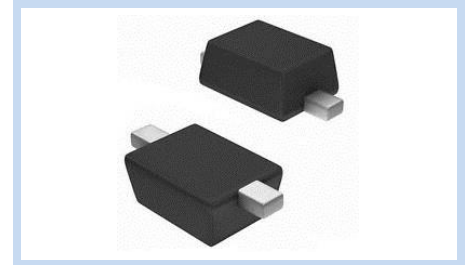
ESD Suppressor 36V Unidirectional SOD-323

ME361U70S323F

MERITEK

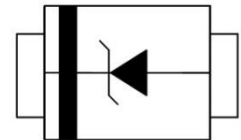
FEATURE

- IEC 61000-4-2 ESD: $\pm 30\text{KV}$ (Air) $\pm 30\text{KV}$ (Contact)
- ESD Protection for One Unidirectional Channel
- High Surge Capability
- Low Leakage Current
- Low Clamping Voltage



APPLICATION

- Cellular Handsets & Accessories
- Personal Digital Assistants (PDAs)
- Notebooks & Handhelds
- Peripherals
- Portable Devices



MAXIMUM RATINGS AND CHARACTERISTICS

Parameter	Symbol	Value	Unit
ESD Voltage (Contact discharge)	V_{ESD}	± 30	KV
ESD Voltage (Air discharge)		± 30	
Operating and Storage Temperature Range	T_J, T_{STG}	-55~+150	$^{\circ}\text{C}$

ELECTRICAL CHARACTERISTICS

Parameter	Condition	Symbol	Min.	Typ.	Max.	Unit
Reverse Stand-Off Voltage	--	V_{RWM}	--	--	36	V
Reverse Breakdown Voltage	$I_{\text{BR}}=1\text{mA}$	V_{BR}	40	--	44.2	V
Reverse Leakage Current	$V_{\text{R}}=36\text{V}$	I_{R}	--	--	1	μA
Clamping Voltage	$I_{\text{PP}}=8.5\text{A}, t_{\text{p}}=8/20\mu\text{s}$	V_{C}	--	--	70	V
Off State Junction Capacitance	$V_{\text{dc}}=0, \text{Bias}, f=1\text{MHz}$	C_{J}	--	--	75	pF

Notes:

1. $T_J=25^{\circ}\text{C}$ unless otherwise specified.
2. Non-repetitive current pulse.
3. Mounted on copper pads to each terminal.
4. Peak pulse power waveform is $t_{\text{p}}=8/20\mu\text{s}$.
5. A transient suppressor is selected according to the working peak reverse voltage (V_{RWM}), which should be equal to or greater than the DC or continuous peak operating voltage level.

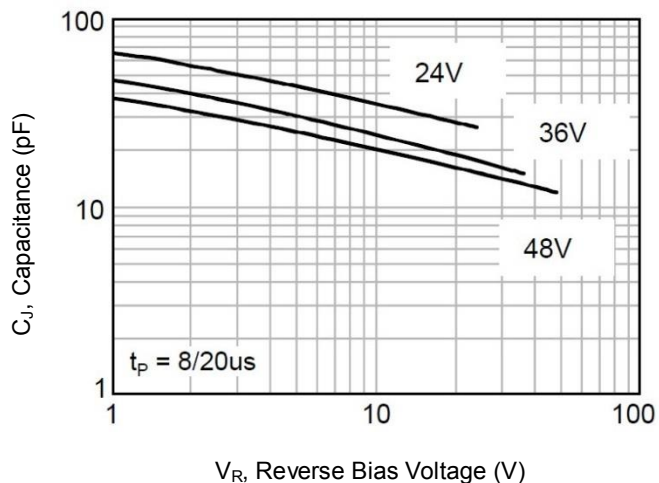
ESD Suppressor 36V Unidirectional SOD-323

ME361U70S323F

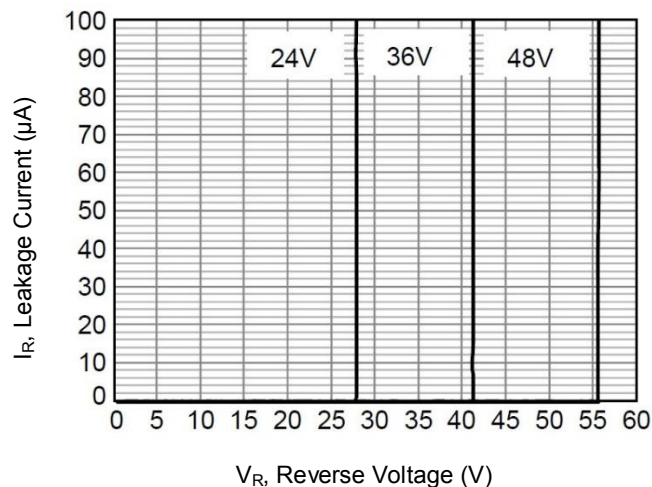
MERITEK

CHARACTERISTIC CURVES

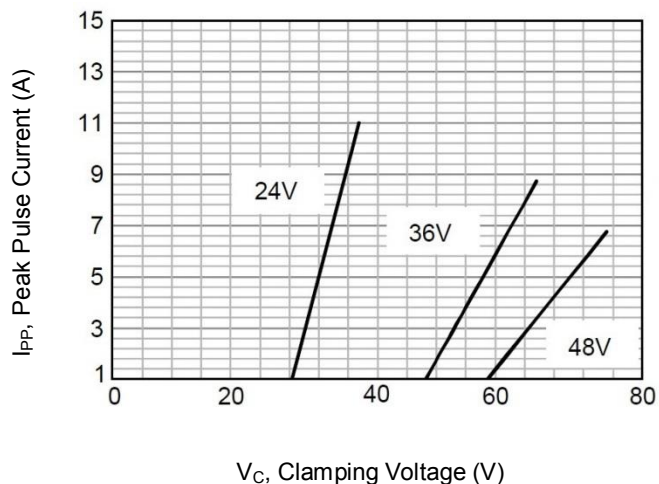
Typical Junction Capacitance



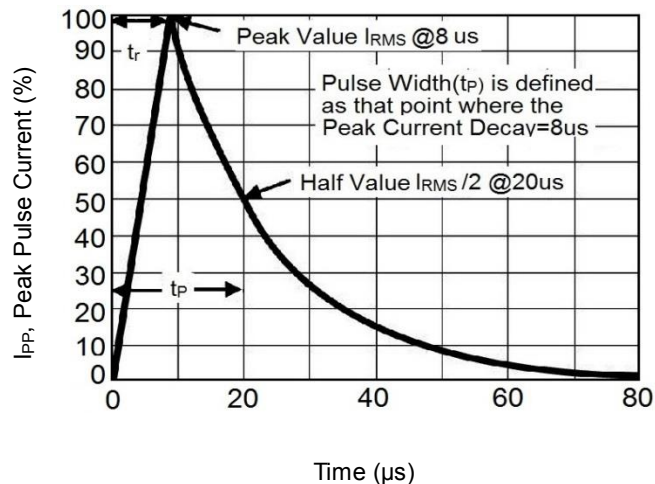
Typical Reverse Characteristics



Typical Peak Clamping Voltage



Pulse Waveform



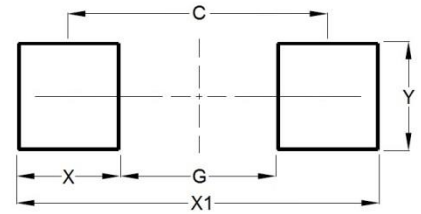
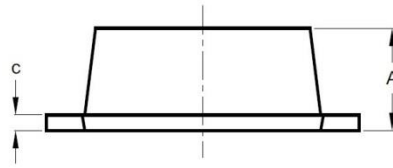
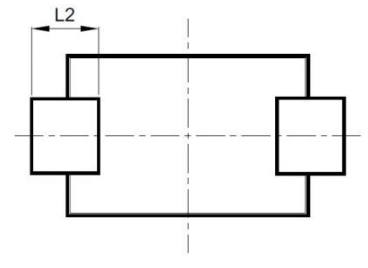
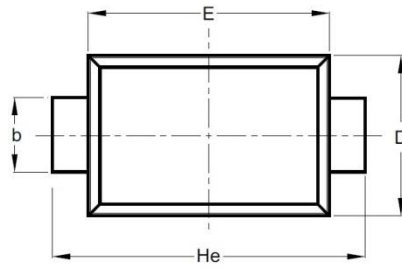
ESD Suppressor 36V Unidirectional SOD-323

ME361U70S323F

MERITEK

DIMENSIONS AND RECOMMENDED LAND PATTERN

Item	Min (mm)	Max (mm)
A	0.70	0.90
b	0.25	0.35
C	0.05	0.15
D	1.15	1.35
E	1.75	1.95
He	2.30	2.70
L2	0.30	-
C	2.00	2.00
G	1.30	1.30
X	0.70	0.70
X1	2.70	2.70
Y	0.40	0.40



*Specifications subject to change without notice.