

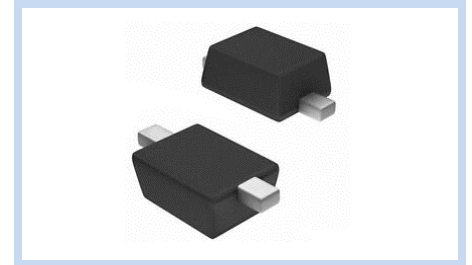
# ESD Suppressor 3.3V Bidirectional SOD-323F

ME3V31BS323FA

MERITEK

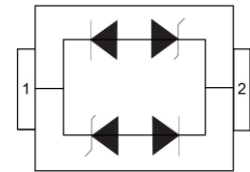
## FEATURE

- IEC 61000-4-2 ESD:  $\pm 30\text{KV}$  (Air)  $\pm 30\text{KV}$  (Contact)
- IEC 61000-4-4 EFT: 40A (5/50ns)
- ESD Protection for one Bidirectional Channel
- Low Clamping Voltage
- Ultra Low Capacitance: 3pF Max
- AEC-Q101 Qualified



## APPLICATION

- Cellular Handsets & Accessories
- Personal Digital Assistants (PDAs)
- Notebooks & Handhelds
- Cordless Phones
- Peripherals
- MP3 players



## MAXIMUM RATINGS AND CHARACTERISTICS

Parameter	Symbol	Value	Unit
ESD Voltage (Contact discharge)	$V_{ESD}$	$\pm 30$	KV
ESD Voltage (Air discharge)		$\pm 30$	
Peak Pulse Power ( $t_p=8/20\mu s$ )	$P_{PP}$	350	W
Operating & Storage Temperature Range	$T_J, T_{STG}$	-55~+150	$^{\circ}\text{C}$

## ELECTRICAL CHARACTERISTICS

Parameter	Condition	Symbol	Min.	Typ.	Max.	Unit
Reverse Stand-Off Voltage	--	$V_{RWM}$	--	--	3.3	V
Reverse Breakdown Voltage	$I_{BR}=1\text{mA}$	$V_{BR}$	4.75	--	5.25	V
Reverse Leakage Current	$V_R=3.3\text{V}$	$I_R$	--	--	20	$\mu\text{A}$
Clamping Voltage	$I_{PP}=1\text{A}, t_p=8/20\mu s$	$V_C$	--	--	7.5	V
Off State Junction Capacitance	$V_{dc}=0, f=1\text{MHz}$	$C_J$	--	--	3	pF

Notes:  $T_J=25^{\circ}\text{C}$  unless otherwise specified

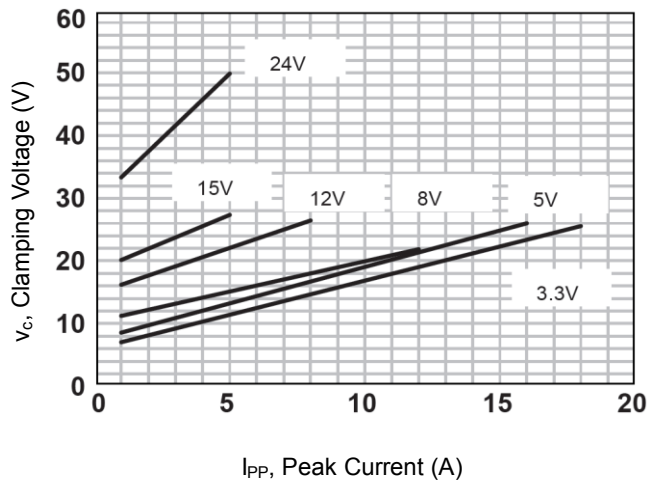
# ESD Suppressor 3.3V Bidirectional SOD-323F

ME3V31BS323FA

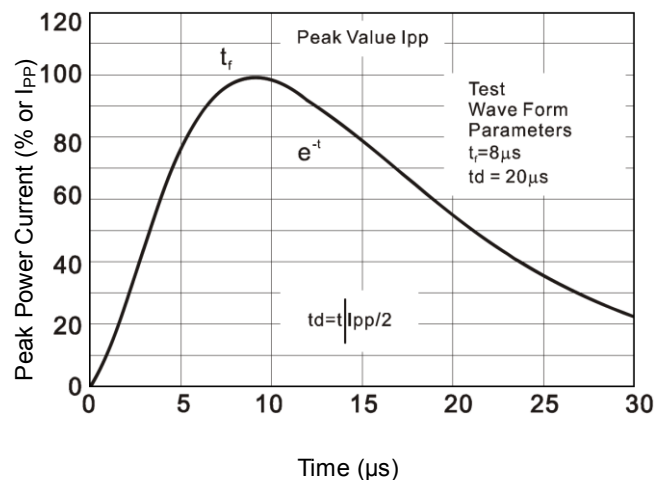
MERITEK

## CHARACTERISTIC CURVES

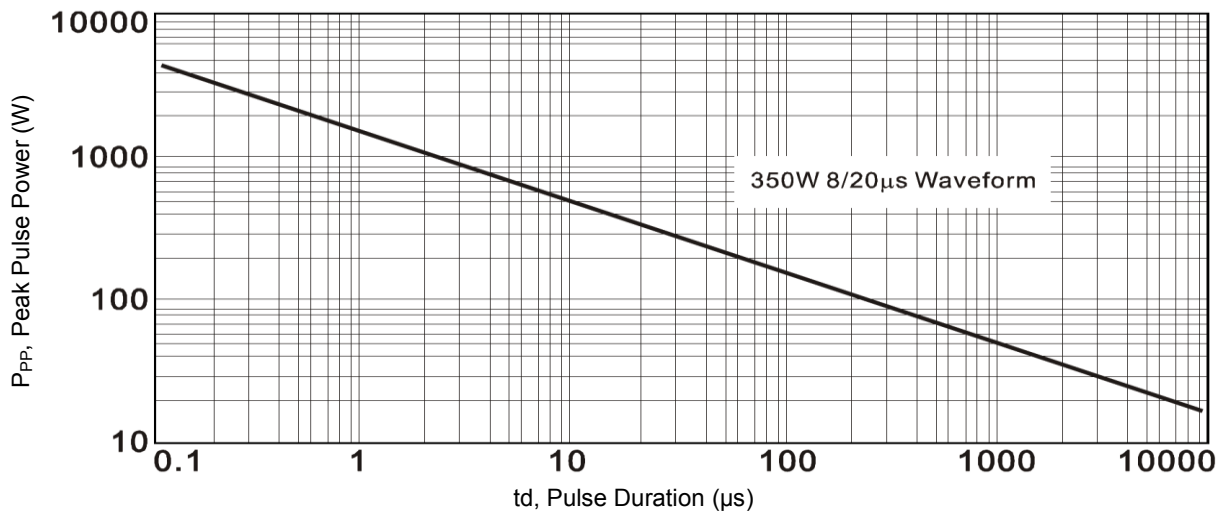
Typical Peak Clamping Voltage (8/20 $\mu$ s)



Pulse Waveforms



Peak Pulse Power Vs Pulse Time



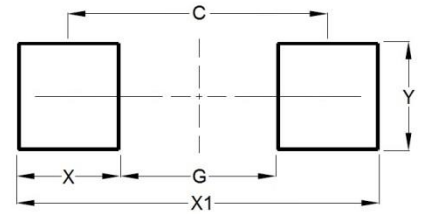
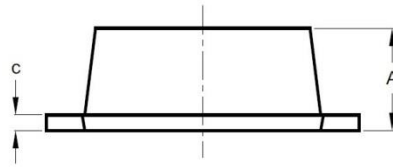
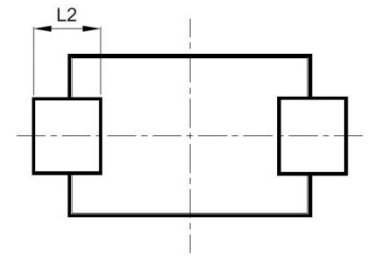
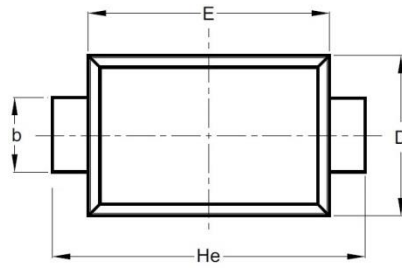
# ESD Suppressor 3.3V Bidirectional SOD-323F

ME3V31BS323FA

MERITEK

## DIMENSIONS AND RECOMMENDED LAND PATTERN

Item	Min (mm)	Max (mm)
A	0.70	0.90
b	0.25	0.35
C	0.05	0.15
D	1.15	1.35
E	1.75	1.95
He	2.30	2.70
L2	0.30	-
C	2.00	2.00
G	1.30	1.30
X	0.70	0.70
X1	2.70	2.70
Y	0.40	0.40



\*Specifications subject to change without notice.