

Single-Phase Bridge Rectifier 40.0A MP-S Package

MP40-S Series

MERITEK

FEATURE

- Operating Temperature: -55 ~ +150°C
- Average Forward Rectified Output Current 40.0A
- Repetitive Reverse Voltage from 50~1000V
- Surge Overload Ratings to 400A
- Integrally Molded Heat Sinks Provide Low Thermal Resistance
- Hole for # 10 Screw
- Flammability Classification 94V-0
- UL Safety Approved: Certification No: E223027



MAXIMUM RATINGS AND THERMAL CHARACTERISTICS

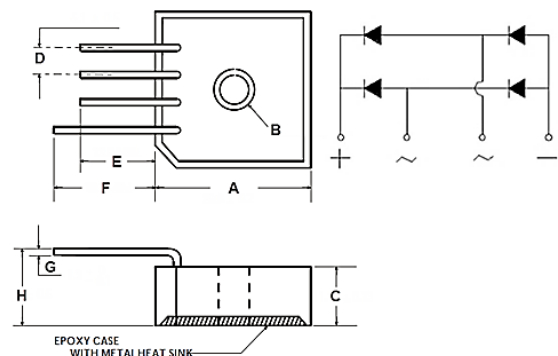


Parameter	Code	MP 40005S	MP 4001S	MP 4002S	MP 4004S	MP 4006S	MP 4008S	MP 4010S	Unit
Maximum Repetitive Peak Reverse Voltage	V_{RRM}	50	100	200	400	600	800	1000	V
Maximum RMS Bridge Input Voltage	V_{RMS}	35	70	140	280	420	560	700	V
Maximum DC Blocking Voltage	V_{DC}	50	100	200	400	600	800	1000	V
Maximum Average Forward Rectified Output Current	I_F	40, $T_A=55^\circ\text{C}$							A
Peak Forward Surge Current Single Sine-Wave Superimposed on Rated Load (JEDEC Method)	I_{FSM}	400							A
Rating for Fusing ($t < 8.3\text{ms}$)	I^2t	664							A^2sec
Maximum Instantaneous Forward Voltage Drop per Diode	V_F	1.0, $I_F=20.0\text{A}$							V
Maximum DC Reverse Current at Rated DC Blocking Voltage per Element	I_R	10, $T_A=25^\circ\text{C}$							μA
	I_R	500, $T_A=125^\circ\text{C}$							μA
Operating Junction and Storage Temperature	T_J, T_{STG}	-55~150							$^\circ\text{C}$
Typical Thermal Resistance per Element	$R_{\theta JA}$	2.0							$^\circ\text{C/W}$

- Note:**
1. Rating at 25°C ambient temperature unless otherwise specified. Resistive or Inductive load, 60Hz. For Capacitive load derate current by 20%.
 2. Thermal resistance from Junction to Ambient on P.C. board mounting.

DIMENSION AND PIN CONFIGURATION

Item	Min. (mm)	Max. (mm)
A	28.40	28.80
B	DIA. 5.10	DIA. 5.60
C	10.97	11.23
D	4.60	5.60
E	13.90	-
F	19.10	-
G	1.20	1.30
H	13.90	14.90



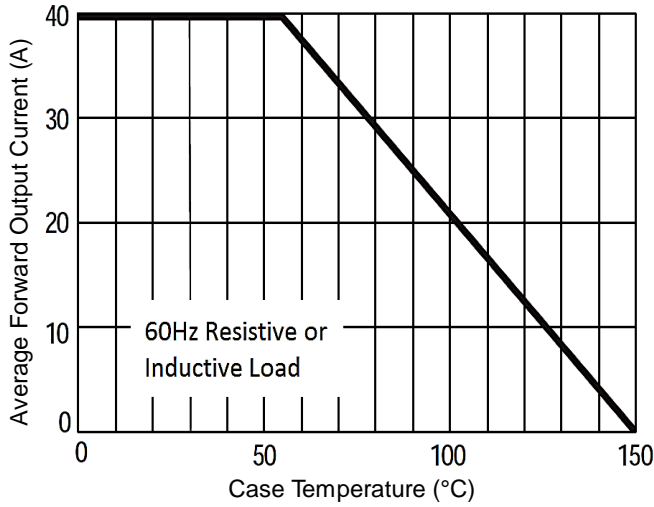
Single-Phase Bridge Rectifier 40.0A MP-S Package

MP40-S Series

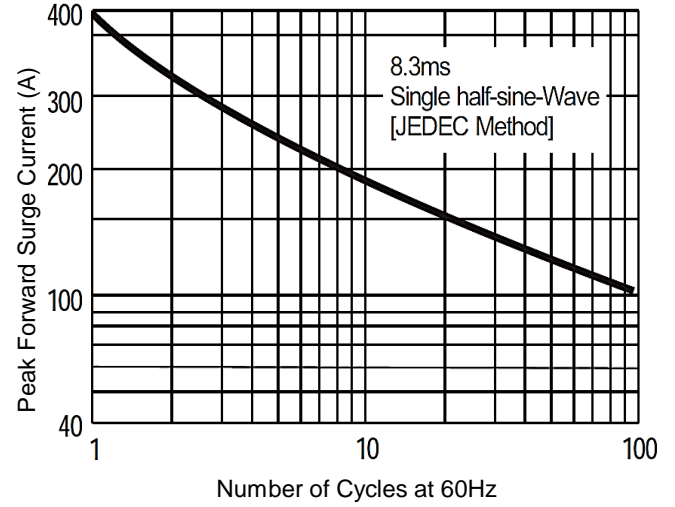
MERITEK

RATING AND CHARACTERISTIC CURVES

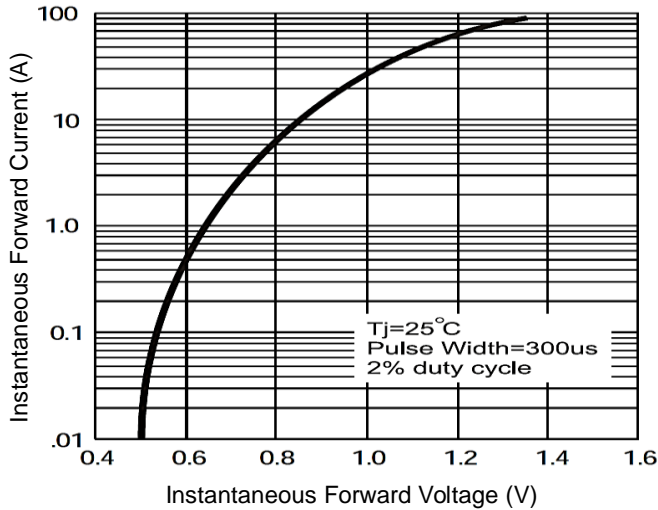
Derating Curve for Output Rectified Current



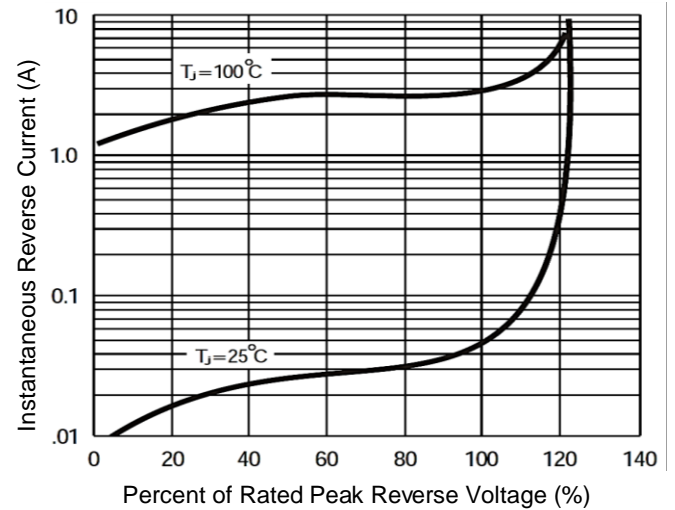
Maximum Non-Repetitive Peak Forward Surge Current



Typical Instantaneous Forward Characteristics



Typical Reverse Characteristics at $T_J = 25^\circ\text{C}$



*Specifications subject to change without notice.