

MOSFET

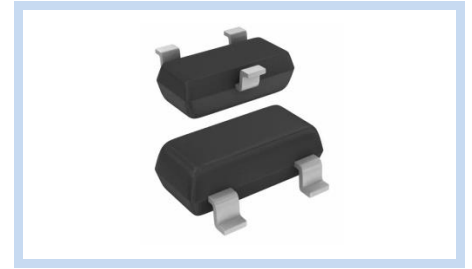
SOT-23-3 Package

MFT-S23 series

MERITEK

FEATURE

- Operating and Storage Temperature: -50°C ~ +150°C
- Fast Switching Characteristics
- Improved dv/dt Capability



PART NUMBERING SYSTEM

MFT **2** **P** **5A8** **S23S**
 (1) (2) (3) (4) (5)

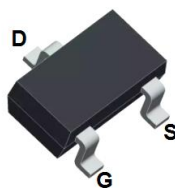


No	Item	Code	Part Description	Series Reference
(1)	Meritek Series	MFT	Meritek MOSFET Series	Surface Mount Type
(2)	Voltage Rating	2	2: 20V	Drain-Source Voltage, 10: 100V
(3)	FET Type	P	P: Single P Channel	P-Channel MOSFET
(4)	Current Rating	5A8	5A8: 5.8A	Continuous Drain Current, T _C =25°C
(5)	Internal Code	S23S	Internal Control Reference	Package or Project Reference

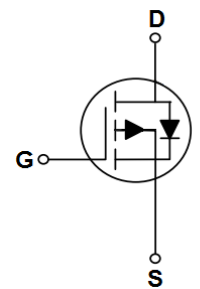
SURFACE MOUNT MOSFET PACKAGE REFERENCE TABLE

Series	FET Type	Channel/ Feature	Continuous Drain Current (I _D) @ 25°C	R _{DS(ON)} Max. @ 4.5 V _{GS}	Power Dissipation (P _D) @25°C	Drain to Source Voltage (V _{DS})
MFT(P)-S23	P	Single	5.8 ~ 6.5A	26 ~ 33mΩ	1.56W	-20V

PIN CONFIGURATION



SOT-23-3



Single P Type

ELECTRICAL CHARACTERISTICS

MFT(P)-S23 Series – Single P Channel Type

Part Number	V _{DS} (V)	I _D (A)		V _{GS} (V)	R _{DS(ON)} (mΩ) max. at V _{GS}		Q _g (nC)		C _{ISS} (pF)	P _D (W) @25°C	T _S , T _J (°C)
		25°C	100°C		10V	4.5V	10V	4.5V			
MFT2P6A5S23S	-20	6.5	4.1	±10	-	20/26	-	19.5	1670	1.56	-55 ~ +150
MFT2P5A8S23S	-20	5.8	3.7	±10	-	28/33	-	16.1	1440	1.56	-55 ~ +150

Note:

1. TA=25°C unless otherwise specified. 2. PD is Power Dissipation Derate above 25°C.

*Specifications subject to change without notice.