

Aluminum Electrolytic Capacitors



RT Series
(General Purpose, Axial)

MERITEK

FEATURES

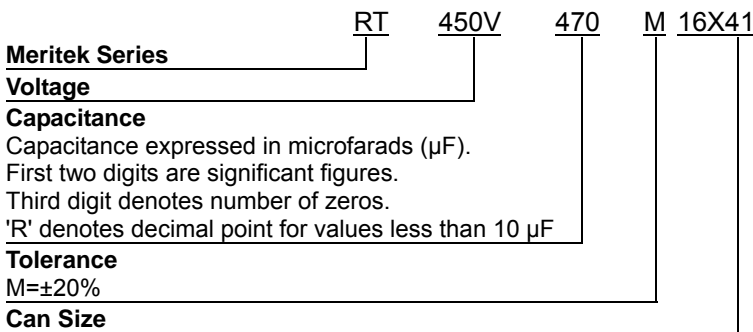
- Wide CV value range
- Load life 2000hrs at 85°C
- High performance



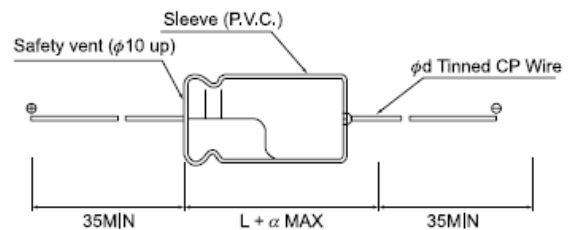
SPECIFICATIONS

Item	Characteristic											
Operation Temperature Range	-40 ~ +85°C						-25 ~ +85°C					
Rated Working Voltage	6.3V ~ 100V						160V ~ 450V					
Capacitance Range	0.47 ~ 22,000μF											
Capacitance Tolerance (120Hz 20°C)	±20%(M)											
Leakage Current	I ≤ 0.02CV or 4 μA *Whichever is greater after 2 minutes application of rated voltage						I ≤ 0.03CV + 10 μA MAX *Whichever is greater after 2 minutes application of rated voltage					
Dissipation Factor (tan δ) (120Hz 20°C)	Add 0.02 per 1000 μF for more than 1000 μF											
	W.V.	6.3	10	16	25	35	50	63	100	160~250	350~450	
	tan δ	0.28	0.24	0.20	0.16	0.14	0.12	0.12	0.10	0.20	0.25	
Low Temperature Stability	Impedance ratio at 120Hz											
	Rated Voltage (V)	6.3	10	16	25	35	50	63	100	160~250	350~400	450
	-25°C / +20°C	5	4	3	2	2	2	2	2	4	4	6
	-40°C / +20°C	12	10	8	5	4	3	3	3	15	10	-
Load Life	After 2000 hours application of W.V. and +85°C ripple current value, the capacitor shall meet the following limits. (DC + ripple peak voltage ≤ rate working voltage)											
	Capacitance Change	≤ ±20% of initial value										
	Dissipation Factor	≤ 200% of initial specified value										
	Leakage current	≤ initial specified value										
Shelf Life	At +85°C, no voltage application after 1000 hours, the capacitor shall meet the limits for load life characteristics. (With voltage treatment)											

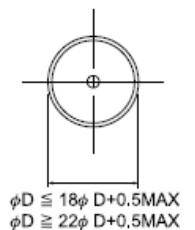
PART NUMBERING SYSTEM



DIMENSION



	∅D	5	6	8	10	13	16	18	22	25
	∅d	0.6			0.8		0.8/1.0			
α	6.3 ~ 100V	1.5			2.0		2.0			
	160 ~ 450V	1.5			2.0		2.0			



Aluminum Electrolytic Capacitors



RT Series

(General Purpose, Axial)

MERITEK

RIPPLE CURRENT COEFFICIENTS

VV	Frequency		50Hz	120Hz	300Hz	1KHz	10KHz
	Cap(μF)						
6.3~100	~47		0.75	1	1.35	1.57	2.00
	100~470		0.80	1	1.23	1.34	1.50
	1,000~22,000		0.85	1	1.10	1.13	1.15
160~450	1~220		0.80	1	1.25	1.40	1.60

CASE SIZE & MAX RIPPLE CURRENT

Case size : ØD x L (mm)
Max ripple current : mA(rms) 85°C 120Hz

WV(SV) Cap (μF)	6.3 (8)	10 (13)	16 (20)	25 (32)	35 (44)	50 (63)	63 (75)	100 (125)								
0.47						5 x 13	5	5 x 13	10							
1						5 x 13	10	5 x 13	18							
2.2						5 x 13	23	5 x 13	27							
3.3						5 x 13	30	5 x 13	34							
4.7						5 x 13	36	5 x 13	40							
10				5 x 13	37	5 x 13	41	5 x 13	50	5 x 13	55	6.3 x 13	65			
22			5 x 13	50	5 x 13	58	5 x 13	70	6.3 x 13	85	6.3 x 13	90	8 x 16	120		
33			5 x 13	60	5 x 13	80	6.3 x 13	95	6.3 x 13	105	6.3 x 16	125	8 x 16	145		
47		5 x 13	70	5 x 13	90	6.3 x 13	105	6.3 x 13	115	6.3 x 16	140	8 x 16	165	8 x 20	190	
100	5 x 13	110	6.3 x 13	130	6.3 x 13	145	6.3 x 16	170	8 x 16	200	8 x 16	220	8 x 20	260	10 x 21	310
220	6.3 x 13	180	6.3 x 16	220	8 x 16	260	8 x 16	280	8 x 20	340	8 x 20	370	10 x 21	440	13 x 26	560
330	6.3 x 16	250	8 x 16	300	8 x 16	320	8 x 16	350	8 x 20	410	10 x 21	510	13 x 26	650	13 x 31	730
470	8 x 16	330	8 x 16	350	8 x 16	390	8 x 20	460	10 x 21	550	13 x 26	740	13 x 26	780	16 x 31	960
1000	8 x 20	530	8 x 20	570	10 x 21	700	10 x 26	830	13 x 26	980	13 x 31	1130	16 x 31	1330	18 x 41	1640
2200	10 x 21	850	13 x 26	1100	13 x 26	1190	13 x 31	1330	16 x 31	1580	16 x 41	1930	18 x 41	2080	25 x 51	2560
3300	13 x 26	1210	13 x 26	1290	13 x 31	1460	16 x 31	1700	16 x 41	1810	18 x 41	2260	22 x 51	2370		
4700	13 x 26	1400	13 x 31	1550	16 x 31	1840	16 x 41	2190	18 x 41	2380	22 x 51	2510	25 x 41	3970		
6800	13 x 31	1650	16 x 31	1930	16 x 41	2310	18 x 41	2480	22 x 51	2760						
10000	16 x 31	1990	16 x 41	2350	18 x 41	2520	22 x 51	3240	25 x 51	3500						
15000	16 x 41	2480	18 x 41	2630	22 x 51	3310										
22000	18 x 41	2730	22 x 51	3390	25 x 51	3500										

WV(SV) Cap (μF)	160 (200)	200 (250)	250 (300)	350 (400)	400 (450)	450 (500)						
1			6.3 x 13	16	6.3 x 16	20	6.3 x 16	20	8 x 16	19		
2.2		6.3 x 13	24	6.3 x 16	30	8 x 16	33	8 x 16	33	8 x 16	28	
3.3	6.3 x 16	37	6.3 x 16	37	8 x 16	40	8 x 16	40	8 x 20	45	8 x 20	38
4.7	8 x 16	50	8 x 16	50	8 x 16	50	8 x 20	55	10 x 21	60	10 x 21	50
10	8 x 20	80	8 x 20	80	10 x 21	90	10 x 26	100	13 x 26	110	13 x 26	90
22	10 x 21	130	10 x 26	145	13 x 26	160	13 x 26	160	13 x 31	170	16 x 31	160
33	10 x 26	180	13 x 26	195	13 x 26	195	13 x 31	200	16 x 31	230	16 x 31	190
47	13 x 26	230	13 x 31	230	13 x 31	240	16 x 31	270	16 x 41	310	16 x 41	270
100	16 x 31	400	16 x 31	400	16 x 41	450	18 x 41	460	22 x 51	370		
220	16 x 41	670	18 x 41	690	22 x 4	764					Case size	RC